

AMELY antibody - C-terminal region

Rabbit Polyclonal Antibody

Catalog # AI13662

Product Information

| | |
|--------------------------|---|
| Application | WB |
| Primary Accession | Q99218 |
| Other Accession | NM_001143 , NP_001134 |
| Reactivity | Human, Mouse, Rat, Pig, Goat, Dog, Horse, Bovine, Sheep |
| Predicted | Human, Mouse, Rat, Pig, Goat, Dog, Horse, Bovine, Sheep |
| Host | Rabbit |
| Clonality | Polyclonal |
| Calculated MW | 23250 |

Additional Information

| | |
|-------------------------------------|--|
| Gene ID | 266 |
| Alias Symbol | AMGL, AMGY |
| Other Names | Amelogenin, Y isoform, AMELY, AMGL, AMGY |
| Format | Liquid. Purified antibody supplied in 1x PBS buffer with 0.09% (w/v) sodium azide and 2% sucrose. |
| Reconstitution & Storage | Add 50 ul of distilled water. Final anti-AMELY antibody concentration is 1 mg/ml in PBS buffer with 2% sucrose. For longer periods of storage, store at 20°C. Avoid repeat freeze-thaw cycles. |
| Precautions | AMELY antibody - C-terminal region is for research use only and not for use in diagnostic or therapeutic procedures. |

Protein Information

| | |
|--------------------------|---|
| Name | AMELY |
| Synonyms | AMGL, AMGY |
| Function | Plays a role in biomineralization. Seems to regulate the formation of crystallites during the secretory stage of tooth enamel development. Thought to play a major role in the structural organization and mineralization of developing enamel. |
| Cellular Location | Secreted, extracellular space, extracellular matrix |

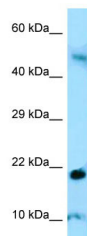
References

Salido E.C.,et al.Am. J. Hum. Genet. 50:303-316(1992).

Lin L.,et al.Submitted (NOV-2003) to the EMBL/GenBank/DDBJ databases.

Nakahori Y.,et al.Genomics 9:264-269(1991).

Images



Host: Rabbit

Target Name: AMELY

Antibody Dilution: 1.0µg/ml

Sample Tissue: Human Thymus

Please note: All products are 'FOR RESEARCH USE ONLY. NOT FOR USE IN DIAGNOSTIC OR THERAPEUTIC PROCEDURES'.