

RAPGEF1 antibody - C-terminal region

Rabbit Polyclonal Antibody

Catalog # AI13683

Product Information

Application	WB
Primary Accession	Q13905
Other Accession	NM_005312 , NP_005303
Reactivity	Human, Mouse, Rat, Zebrafish, Pig, Dog, Guinea Pig, Horse, Bovine
Predicted	Human, Mouse, Rat, Pig, Chicken, Dog, Guinea Pig, Horse, Bovine
Host	Rabbit
Clonality	Polyclonal
Calculated MW	120548

Additional Information

Gene ID	2889
Alias Symbol	C3G, DKFZp781P1719, GRF2
Other Names	Rap guanine nucleotide exchange factor 1, CRK SH3-binding GNRP, Guanine nucleotide-releasing factor 2, Protein C3G, RAPGEF1, GRF2
Format	Liquid. Purified antibody supplied in 1x PBS buffer with 0.09% (w/v) sodium azide and 2% sucrose.
Reconstitution & Storage	Add 50 ul of distilled water. Final anti-RAPGEF1 antibody concentration is 1 mg/ml in PBS buffer with 2% sucrose. For longer periods of storage, store at 20°C. Avoid repeat freeze-thaw cycles.
Precautions	RAPGEF1 antibody - C-terminal region is for research use only and not for use in diagnostic or therapeutic procedures.

Protein Information

Name	RAPGEF1
Synonyms	GRF2
Function	Guanine nucleotide-releasing protein that binds to SH3 domain of CRK and GRB2/ASH. Transduces signals from CRK to activate RAS. Involved in cell branching and adhesion mediated by BCAR1-CRK-RAPGEF1 signaling and activation of RAP1 (PubMed: 12432078). Plays a role in the establishment of basal endothelial barrier function. Plays a role in nerve growth factor (NGF)-induced sustained activation of Rap1 and neurite outgrowth.
Cellular Location	Early endosome.

Tissue Location

Ubiquitously expressed in adult and fetus. Expression is high in adult skeletal muscle and placenta and in fetal brain and heart. Low levels of expression in adult and fetal liver

References

Tanaka S.,et al.Proc. Natl. Acad. Sci. U.S.A. 91:3443-3447(1994).

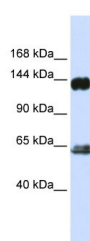
Knudsen B.,et al.J. Biol. Chem. 269:32781-32787(1994).

Bechtel S.,et al.BMC Genomics 8:399-399(2007).

Humphray S.J.,et al.Nature 429:369-374(2004).

Matsuda M.,et al.J. Biol. Chem. 271:14468-14472(1996).

Images



WB Suggested Anti-RAPGEF1 Antibody Titration: 0.2-1
µg/ml

ELISA Titer: 1:312500

Positive Control: Human brain

Please note: All products are 'FOR RESEARCH USE ONLY. NOT FOR USE IN DIAGNOSTIC OR THERAPEUTIC PROCEDURES'.