

# LOXL1 antibody - N-terminal region

Rabbit Polyclonal Antibody

Catalog # AI13685

## Product Information

---

|                          |   |
|--------------------------|---|
| <b>Application</b>       | WB  |
| <b>Primary Accession</b> | <a href="#">Q08397</a>                                    |
| <b>Other Accession</b>   | <a href="#">NM_005576</a> , <a href="#">NP_005567</a>     |
| <b>Reactivity</b>        | Human, Mouse, Rat, Rabbit, Pig, Guinea Pig, Horse, Bovine |
| <b>Predicted</b>         | Human, Mouse, Rat, Rabbit, Pig, Guinea Pig, Horse, Bovine |
| <b>Host</b>              | Rabbit  |
| <b>Clonality</b>         | Polyclonal  |
| <b>Calculated MW</b>     | 63110   |

## Additional Information

---

|                                     |  |
|-------------------------------------|--|
| <b>Gene ID</b>                      | 4016   |
| <b>Alias Symbol</b>                 | LOL, LOXL  |
| <b>Other Names</b>                  | Lysyl oxidase homolog 1, 1.4.3.-, Lysyl oxidase-like protein 1, LOL, LOXL1, LOXL   |
| <b>Format</b>                       | Liquid. Purified antibody supplied in 1x PBS buffer with 0.09% (w/v) sodium azide and 2% sucrose.  |
| <b>Reconstitution &amp; Storage</b> | Add 50 ul of distilled water. Final anti-LOXL1 antibody concentration is 1 mg/ml in PBS buffer with 2% sucrose. For longer periods of storage, store at 20°C. Avoid repeat freeze-thaw cycles. |
| <b>Precautions</b>                  | LOXL1 antibody - N-terminal region is for research use only and not for use in diagnostic or therapeutic procedures.   |

## Protein Information

---

|                          |  |
|--------------------------|--|
| <b>Name</b>              | LOXL1  |
| <b>Synonyms</b>          | LOXL   |
| <b>Function</b>          | Catalyzes the oxidative deamination of lysine and hydroxylysine residues in collagen and elastin, resulting in the formation of covalent cross-linkages, and the stabilization of collagen and elastin fibers (By similarity). Essential for the elastic fiber homeostasis and for their maintenance at adult age (By similarity). |
| <b>Cellular Location</b> | Secreted, extracellular space. Secreted, extracellular space, extracellular matrix {ECO:0000250 UniProtKB:P97873}  |

## Tissue Location

Expressed in ocular tissues including the iris, ciliary body, lens and optic nerve. Not detected in the retina

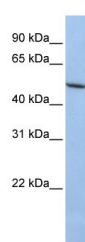
## References

---

Kenyon K.,et al.J. Biol. Chem. 268:18435-18437(1993).  
Kenyon K.,et al.Submitted (MAY-1995) to the EMBL/GenBank/DDBJ databases.  
Ota T.,et al.Nat. Genet. 36:40-45(2004).  
Zody M.C.,et al.Nature 440:671-675(2006).  
Thorleifsson G.,et al.Science 317:1397-1400(2007).

## Images

---



WB Suggested Anti-LOXL1 Antibody Titration: 0.2-1 µg/ml  
ELISA Titer: 1:312500  
Positive Control: HepG2 cell lysate

Please note: All products are 'FOR RESEARCH USE ONLY. NOT FOR USE IN DIAGNOSTIC OR THERAPEUTIC PROCEDURES'.