

LOXL1 antibody - middle region

Rabbit Polyclonal Antibody

Catalog # AI13686

Product Information

Application	WB
Primary Accession	Q08397
Other Accession	NM_005576 , NP_005567
Reactivity	Human, Mouse, Rat, Rabbit, Zebrafish, Pig, Guinea Pig, Horse, Bovine
Predicted	Human, Mouse, Rat, Rabbit, Zebrafish, Pig, Guinea Pig, Horse, Bovine
Host	Rabbit
Clonality	Polyclonal
Calculated MW	63110

Additional Information

Gene ID	4016
Alias Symbol	LOL, LOXL
Other Names	Lysyl oxidase homolog 1, 1.4.3.-, Lysyl oxidase-like protein 1, LOL, LOXL1, LOXL
Format	Liquid. Purified antibody supplied in 1x PBS buffer with 0.09% (w/v) sodium azide and 2% sucrose.
Reconstitution & Storage	Add 50 ul of distilled water. Final anti-LOXL1 antibody concentration is 1 mg/ml in PBS buffer with 2% sucrose. For longer periods of storage, store at 20°C. Avoid repeat freeze-thaw cycles.
Precautions	LOXL1 antibody - middle region is for research use only and not for use in diagnostic or therapeutic procedures.

Protein Information

Name	LOXL1
Synonyms	LOXL
Function	Catalyzes the oxidative deamination of lysine and hydroxylysine residues in collagen and elastin, resulting in the formation of covalent cross-linkages, and the stabilization of collagen and elastin fibers (By similarity). Essential for the elastic fiber homeostasis and for their maintenance at adult age (By similarity).
Cellular Location	Secreted, extracellular space. Secreted, extracellular space, extracellular matrix {ECO:0000250 UniProtKB:P97873}

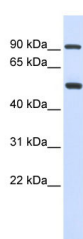
Tissue Location

Expressed in ocular tissues including the iris, ciliary body, lens and optic nerve. Not detected in the retina

References

Kenyon K.,et al.J. Biol. Chem. 268:18435-18437(1993).
Kenyon K.,et al.Submitted (MAY-1995) to the EMBL/GenBank/DDBJ databases.
Ota T.,et al.Nat. Genet. 36:40-45(2004).
Zody M.C.,et al.Nature 440:671-675(2006).
Thorleifsson G.,et al.Science 317:1397-1400(2007).

Images



WB Suggested Anti-LOXL1 Antibody Titration: 0.2-1 µg/ml
ELISA Titer: 1:1562500
Positive Control: Human Lung

Please note: All products are 'FOR RESEARCH USE ONLY. NOT FOR USE IN DIAGNOSTIC OR THERAPEUTIC PROCEDURES'.