

1110067D22Rik antibody - middle region

Rabbit Polyclonal Antibody

Catalog # AI13725

Product Information

Application	WB
Primary Accession	Q8VED9
Other Accession	NM_173752 , NP_776113
Reactivity	Human, Mouse, Rat, Rabbit, Pig, Dog, Guinea Pig, Horse, Bovine
Predicted	Human, Mouse, Rat, Rabbit, Pig, Dog, Guinea Pig, Horse, Bovine
Host	Rabbit
Clonality	Polyclonal
Calculated MW	18956

Additional Information

Gene ID	216551
Alias Symbol Other Names	Grpa, Hspc159, Lgalsla, A530071M23, RP23-455B19.1, 1110067D22Rik Galectin-related protein, Galectin-related protein A, Lectin galactoside-binding-like protein A, Lgalsl, Grpa, Lgalsla
Format	Liquid. Purified antibody supplied in 1x PBS buffer with 0.09% (w/v) sodium azide and 2% sucrose.
Reconstitution & Storage	Add 50 ul of distilled water. Final anti-1110067D22Rik antibody concentration is 1 mg/ml in PBS buffer with 2% sucrose. For longer periods of storage, store at 20°C. Avoid repeat freeze-thaw cycles.
Precautions	1110067D22Rik antibody - middle region is for research use only and not for use in diagnostic or therapeutic procedures.

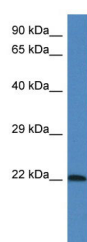
Protein Information

Name	Lgalsl
Synonyms	Grpa, Lgalsla
Function	Does not bind lactose, and may not bind carbohydrates.

References

Carninci P., et al. Science 309:1559-1563(2005).
Church D.M., et al. PLoS Biol. 7:E1000112-E1000112(2009).

Images



WB Suggested Anti-1110067D22Rik Antibody Titration: 1.0
µg/ml
Positive Control: Mouse Brain

Please note: All products are 'FOR RESEARCH USE ONLY. NOT FOR USE IN DIAGNOSTIC OR THERAPEUTIC PROCEDURES'.