

Dkk2 antibody - middle region

Rabbit Polyclonal Antibody

Catalog # AI13730

Product Information

Application	WB
Primary Accession	Q9QYZ8
Other Accession	NM_020265 , NP_064661
Reactivity	Human, Mouse, Rat, Rabbit, Pig, Dog, Guinea Pig, Horse, Bovine
Predicted	Human, Mouse, Rat, Pig, Chicken, Dog, Bovine
Host	Rabbit
Clonality	Polyclonal
Calculated MW	28432

Additional Information

Gene ID	56811
Other Names	Dickkopf-related protein 2, Dickkopf-2, Dkk-2, mDkk-2, Dkk2
Format	Liquid. Purified antibody supplied in 1x PBS buffer with 0.09% (w/v) sodium azide and 2% sucrose.
Reconstitution & Storage	Add 50 ul of distilled water. Final anti-Dkk2 antibody concentration is 1 mg/ml in PBS buffer with 2% sucrose. For longer periods of storage, store at 20°C. Avoid repeat freeze-thaw cycles.
Precautions	Dkk2 antibody - middle region is for research use only and not for use in diagnostic or therapeutic procedures.

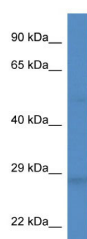
Protein Information

Name	Dkk2 {ECO:0000312 MGI:MGI:1890663}
Function	Antagonizes canonical Wnt signaling by inhibiting LRP5/6 interaction with Wnt and by forming a ternary complex with the transmembrane protein KREMEN that promotes internalization of LRP5/6. DKKs play an important role in vertebrate development, where they locally inhibit Wnt regulated processes such as antero-posterior axial patterning, limb development, somitogenesis and eye formation. In the adult, Dkks are implicated in bone formation and bone disease, cancer and Alzheimer disease.
Cellular Location	Secreted.

References

Monaghan P.A.,et al.Mech. Dev. 87:45-56(1999).
Carninci P.,et al.Science 309:1559-1563(2005).
Church D.M.,et al.PLoS Biol. 7:E1000112-E1000112(2009).
Mural R.J.,et al.Submitted (JUL-2005) to the EMBL/GenBank/DDBJ databases.
Niehrs C.,et al.Oncogene 25:7469-7481(2006).

Images



WB Suggested Anti-Dkk2 Antibody Titration: 1.0 µg/ml
Positive Control: Mouse Pancreas

Please note: All products are 'FOR RESEARCH USE ONLY. NOT FOR USE IN DIAGNOSTIC OR THERAPEUTIC PROCEDURES'.