

FAM120A antibody - middle region

Rabbit Polyclonal Antibody

Catalog # AI13741

Product Information

Application	WB
Primary Accession	Q9NZB2
Other Accession	NM_014612 , NP_055427
Reactivity	Human, Mouse, Rat, Rabbit, Pig, Dog, Horse, Bovine
Predicted	Rat, Rabbit, Pig, Chicken, Dog, Horse
Host	Rabbit
Clonality	Polyclonal
Calculated MW	121888

Additional Information

Gene ID	23196
Alias Symbol Other Names	C9orf10, DNAPTP1, DNAPTP5, MGC111527, MGC133257, OSSA Constitutive coactivator of PPAR-gamma-like protein 1, Oxidative stress-associated Src activator, Protein FAM120A, FAM120A, C9orf10, KIAA0183, OSSA
Format	Liquid. Purified antibody supplied in 1x PBS buffer with 0.09% (w/v) sodium azide and 2% sucrose.
Reconstitution & Storage	Add 50 ul of distilled water. Final anti-FAM120A antibody concentration is 1 mg/ml in PBS buffer with 2% sucrose. For longer periods of storage, store at 20°C. Avoid repeat freeze-thaw cycles.
Precautions	FAM120A antibody - middle region is for research use only and not for use in diagnostic or therapeutic procedures.

Protein Information

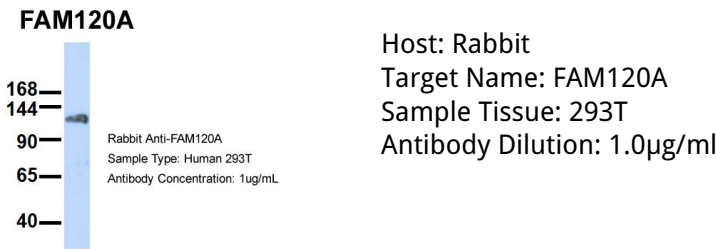
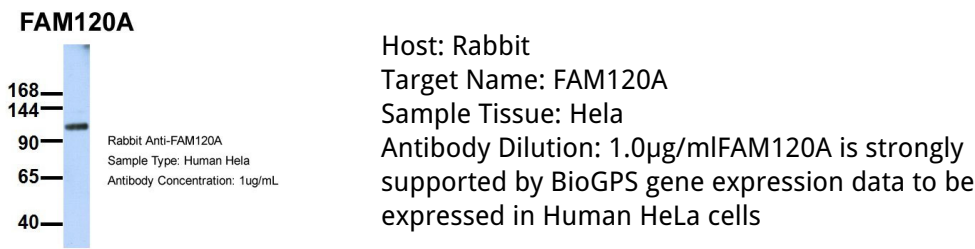
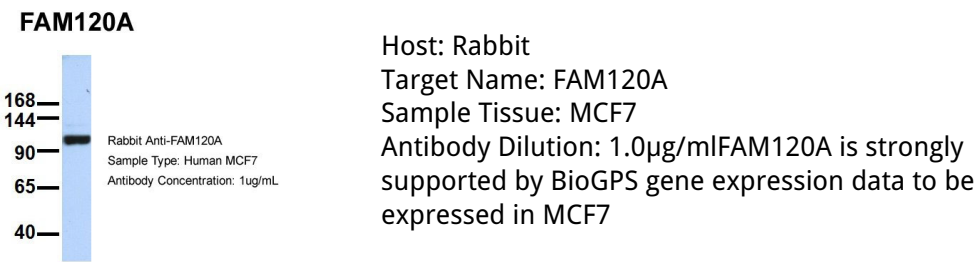
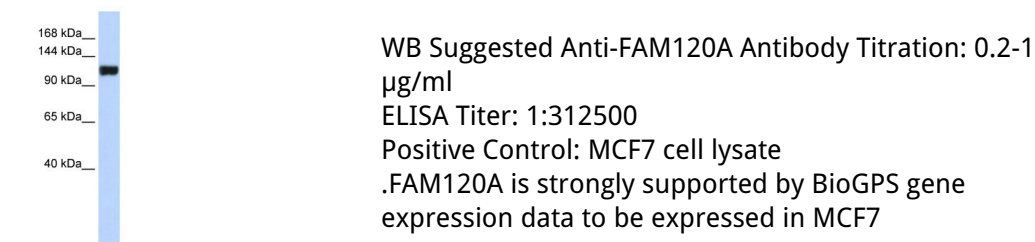
Name	FAM120A
Function	Component of the oxidative stress-induced survival signaling. May regulate the activation of SRC family protein kinases (PubMed: 19015244). May act as a scaffolding protein enabling SRC family protein kinases to phosphorylate and activate PI3-kinase (PubMed: 19015244). Binds IGF2 RNA and promotes the production of IGF2 protein (PubMed: 19015244).
Cellular Location	Cytoplasm. Cell membrane; Peripheral membrane protein; Cytoplasmic side. Note=Translocates from the cytosol to plasma membrane after UV irradiation.

Tissue Location	Widely expressed (PubMed:14585507). In gastric mucosa, detected in the bottom region of the foveolar epithelium (at protein level) (PubMed:19015244).
------------------------	---

References

Brahmbhatt S.B.,et al.Submitted (NOV-1999) to the EMBL/GenBank/DDBJ databases.
Humphray S.J.,et al.Nature 429:369-374(2004).
Nagase T.,et al.DNA Res. 3:17-24(1996).
Ohara O.,et al.Submitted (JUN-2005) to the EMBL/GenBank/DDBJ databases.
Holden S.,et al.Gene 318:149-161(2003).

Images



Please note: All products are 'FOR RESEARCH USE ONLY. NOT FOR USE IN DIAGNOSTIC OR THERAPEUTIC PROCEDURES'.