

# KIFAP3 antibody - middle region

Rabbit Polyclonal Antibody

Catalog # AI13749

## Product Information

---

<b>Application</b>	WB
<b>Primary Accession</b>	<a href="#">Q92845</a>
<b>Other Accession</b>	<a href="#">NM_014970</a> , <a href="#">NP_055785</a>
<b>Reactivity</b>	Human, Mouse, Rat, Rabbit, Dog, Guinea Pig, Horse, Bovine
<b>Predicted</b>	Human, Mouse, Rat, Rabbit, Pig, Chicken, Dog, Guinea Pig, Horse, Bovine
<b>Host</b>	Rabbit
<b>Clonality</b>	Polyclonal
<b>Calculated MW</b>	91205

## Additional Information

---

<b>Gene ID</b>	22920
<b>Alias Symbol</b> <b>Other Names</b>	FLJ22818, KAP3, SMAP, Smg-GDS, dj190I16.1, KAP-3 Kinesin-associated protein 3, KAP-3, KAP3, Smg GDS-associated protein, KIFAP3, KIF3AP, SMAP
<b>Format</b>	Liquid. Purified antibody supplied in 1x PBS buffer with 0.09% (w/v) sodium azide and 2% sucrose.
<b>Reconstitution &amp; Storage</b>	Add 50 ul of distilled water. Final anti-KIFAP3 antibody concentration is 1 mg/ml in PBS buffer with 2% sucrose. For longer periods of storage, store at 20°C. Avoid repeat freeze-thaw cycles.
<b>Precautions</b>	KIFAP3 antibody - middle region is for research use only and not for use in diagnostic or therapeutic procedures.

## Protein Information

---

<b>Name</b>	KIFAP3
<b>Synonyms</b>	KIF3AP, SMAP
<b>Function</b>	Involved in tethering the chromosomes to the spindle pole and in chromosome movement. Binds to the tail domain of the KIF3A/KIF3B heterodimer to form a heterotrimeric KIF3 complex and may regulate the membrane binding of this complex (By similarity).

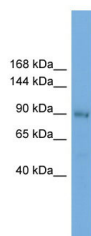
## References

---

Shimizu K.,et al.J. Biol. Chem. 271:27013-27017(1996).  
Ota T.,et al.Nat. Genet. 36:40-45(2004).  
Gregory S.G.,et al.Nature 441:315-321(2006).  
Mural R.J.,et al.Submitted (JUL-2005) to the EMBL/GenBank/DDBJ databases.  
Shimizu K.,et al.J. Biol. Chem. 273:6591-6594(1998).

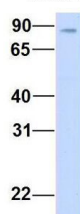
## Images

---



WB Suggested Anti-KIFAP3 Antibody Titration: 0.2-1 µg/ml  
Positive Control: PANC1 cell lysate

### KIFAP3



Rabbit Anti-KIFAP3  
Sample Type: Human Fetal Brain  
Antibody Concentration: 1ug/mL

Host:Rabbit  
Target Name:KIFAP3  
Sample Tissue:Human Fetal Brain  
Antibody Dilution: 1.0µg/ml

Please note: All products are 'FOR RESEARCH USE ONLY. NOT FOR USE IN DIAGNOSTIC OR THERAPEUTIC PROCEDURES'.