

KIAA0692 antibody - middle region

Rabbit Polyclonal Antibody

Catalog # AI13753

Product Information

Application	WB
Primary Accession	Q86XL3
Other Accession	NM_015114 , NP_055929
Reactivity	Human
Predicted	Human
Host	Rabbit
Clonality	Polyclonal
Calculated MW	104114

Additional Information

Gene ID	23141
Alias Symbol	FLJ22280, FLJ36132, LEMD7, KIAA0692
Other Names	Ankyrin repeat and LEM domain-containing protein 2, LEM domain-containing protein 4, ANKLE2, KIAA0692, LEM4
Format	Liquid. Purified antibody supplied in 1x PBS buffer with 0.09% (w/v) sodium azide and 2% sucrose.
Reconstitution & Storage	Add 50 ul of distilled water. Final anti-KIAA0692 antibody concentration is 1 mg/ml in PBS buffer with 2% sucrose. For longer periods of storage, store at 20°C. Avoid repeat freeze-thaw cycles.
Precautions	KIAA0692 antibody - middle region is for research use only and not for use in diagnostic or therapeutic procedures.

Protein Information

Name	ANKLE2
Synonyms	KIAA0692, LEM4
Function	Involved in mitotic nuclear envelope reassembly by promoting dephosphorylation of BAF/BANF1 during mitotic exit (PubMed: 22770216). Coordinates the control of BAF/BANF1 dephosphorylation by inhibiting VRK1 kinase and promoting dephosphorylation of BAF/BANF1 by protein phosphatase 2A (PP2A), thereby facilitating nuclear envelope assembly (PubMed: 22770216). May regulate nuclear localization of VRK1 in non-dividing cells (PubMed: 31735666). It is unclear whether it acts as a real PP2A regulatory subunit or whether it is involved in recruitment of the PP2A

complex (PubMed:[22770216](#)). Involved in brain development (PubMed:[25259927](#)).

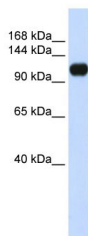
Cellular Location

Endoplasmic reticulum membrane; Single-pass type III membrane protein

References

Ota T.,et al.Nat. Genet. 36:40-45(2004).
Scherer S.E.,et al.Nature 440:346-351(2006).
Ishikawa K.,et al.DNA Res. 5:169-176(1998).
Cantin G.T.,et al.J. Proteome Res. 7:1346-1351(2008).
Dephoure N.,et al.Proc. Natl. Acad. Sci. U.S.A. 105:10762-10767(2008).

Images



WB Suggested Anti-KIAA0692 Antibody Titration: 0.2-1
µg/ml
ELISA Titer: 1:62500
Positive Control: 293T cell lysate
There is BioGPS gene expression data showing that
ANKLE2 is expressed in HEK293T

Please note: All products are 'FOR RESEARCH USE ONLY. NOT FOR USE IN DIAGNOSTIC OR THERAPEUTIC PROCEDURES'.