

Zc3h3 antibody - N-terminal region

Rabbit Polyclonal Antibody

Catalog # AI13754

Product Information

Application	WB
Primary Accession	Q8CHP0
Other Accession	NM_172121 , NP_742119
Reactivity	Human, Mouse, Rat, Guinea Pig, Horse, Bovine
Predicted	Human, Mouse, Rat, Pig, Dog, Guinea Pig, Horse, Bovine
Host	Rabbit
Clonality	Polyclonal
Calculated MW	103224

Additional Information

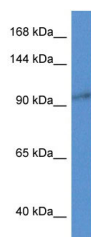
Gene ID	223642
Alias Symbol	BC049953, Kiaa0150, Smicl, Zc3hdc3
Other Names	Zinc finger CCCH domain-containing protein 3, Zc3h3, Kiaa0150, Zc3hdc3, Zfp623
Format	Liquid. Purified antibody supplied in 1x PBS buffer with 0.09% (w/v) sodium azide and 2% sucrose.
Reconstitution & Storage	Add 50 ul of distilled water. Final anti-Zc3h3 antibody concentration is 1 mg/ml in PBS buffer with 2% sucrose. For longer periods of storage, store at 20°C. Avoid repeat freeze-thaw cycles.
Precautions	Zc3h3 antibody - N-terminal region is for research use only and not for use in diagnostic or therapeutic procedures.

Protein Information

Name	Zc3h3
Function	Required for the export of polyadenylated mRNAs from the nucleus (By similarity). Enhances ACVR1B-induced SMAD-dependent transcription. Binds to single-stranded DNA but not to double-stranded DNA in vitro. Involved in RNA cleavage (PubMed: 16115198).
Cellular Location	Nucleus.

References

Images



WB Suggested Anti-Zc3h3 Antibody Titration: 1.0 µg/ml
Positive Control: Mouse Pancreas

Please note: All products are 'FOR RESEARCH USE ONLY. NOT FOR USE IN DIAGNOSTIC OR THERAPEUTIC PROCEDURES'.