

IRF2BP1 antibody - middle region

Rabbit Polyclonal Antibody

Catalog # AI13776

Product Information

Application	WB
Primary Accession	Q8IU81
Other Accession	NM_015649 , NP_056464
Reactivity	Human, Mouse, Rat, Rabbit, Pig, Dog, Guinea Pig, Horse, Bovine
Predicted	Rat, Rabbit, Pig, Dog, Guinea Pig, Horse, Bovine
Host	Rabbit
Clonality	Polyclonal
Calculated MW	61688

Additional Information

Gene ID	26145
Alias Symbol	DKFZP434M154
Other Names	Interferon regulatory factor 2-binding protein 1, IRF-2-binding protein 1, IRF-2BP1, Probable E3 ubiquitin-protein ligase IRF2BP1, 6.3.2.-, IRF2BP1
Format	Liquid. Purified antibody supplied in 1x PBS buffer with 0.09% (w/v) sodium azide and 2% sucrose.
Reconstitution & Storage	Add 50 ul of distilled water. Final anti-IRF2BP1 antibody concentration is 1 mg/ml in PBS buffer with 2% sucrose. For longer periods of storage, store at 20°C. Avoid repeat freeze-thaw cycles.
Precautions	IRF2BP1 antibody - middle region is for research use only and not for use in diagnostic or therapeutic procedures.

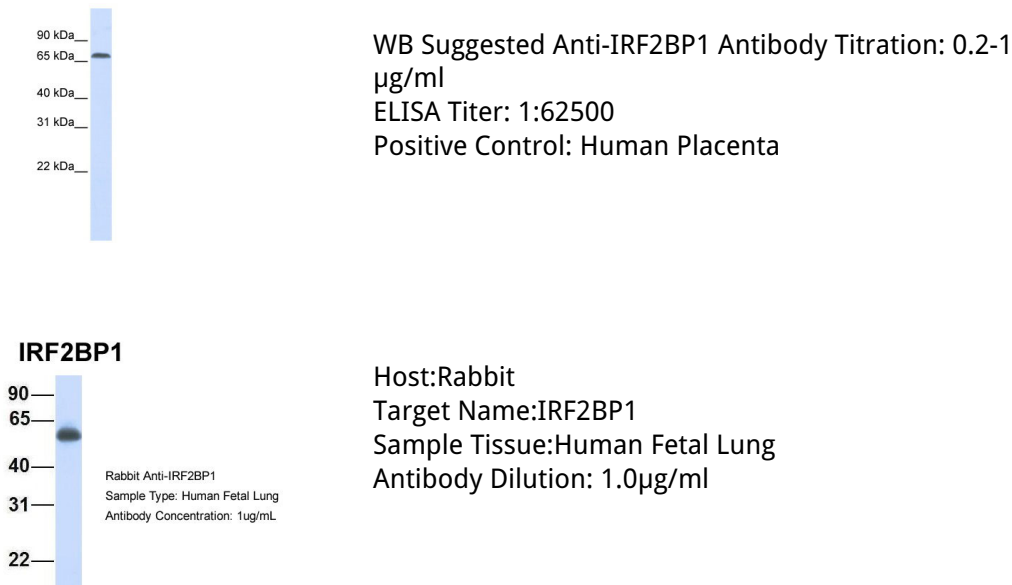
Protein Information

Name	IRF2BP1
Function	Acts as a transcriptional corepressor in a IRF2-dependent manner; this repression is not mediated by histone deacetylase activities. May act as an E3 ligase towards JDP2, enhancing its polyubiquitination. Represses ATF2-dependent transcriptional activation.
Cellular Location	Nucleus.

References

Childs K.S.,et al.Nucleic Acids Res. 31:3016-3026(2003).
Totoki Y.,et al.Submitted (APR-2005) to the EMBL/GenBank/DDBJ databases.
Mural R.J.,et al.Submitted (JUL-2005) to the EMBL/GenBank/DDBJ databases.
Bechtel S.,et al.BMC Genomics 8:399-399(2007).
Olsen J.V.,et al.Cell 127:635-648(2006).

Images



Please note: All products are 'FOR RESEARCH USE ONLY. NOT FOR USE IN DIAGNOSTIC OR THERAPEUTIC PROCEDURES'.