

CCNDBP1 antibody - middle region

Rabbit Polyclonal Antibody

Catalog # AI13791

Product Information

Application	WB
Primary Accession	O95273
Other Accession	NM_037370 , NP_411241
Reactivity	Human, Mouse, Rat, Rabbit, Dog, Guinea Pig, Horse, Bovine
Predicted	Human, Pig, Dog, Horse
Host	Rabbit
Clonality	Polyclonal
Calculated MW	40262

Additional Information

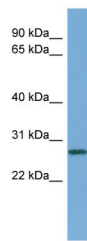
Gene ID	23582
Alias Symbol	DIP1, GCIP, HHM
Other Names	Cyclin-D1-binding protein 1, Grap2 and cyclin-D-interacting protein, Human homolog of Maid, CCNDBP1, DIP1, GCIP, HHM
Format	Liquid. Purified antibody supplied in 1x PBS buffer with 0.09% (w/v) sodium azide and 2% sucrose.
Reconstitution & Storage	Add 50 ul of distilled water. Final anti-CCNDBP1 antibody concentration is 1 mg/ml in PBS buffer with 2% sucrose. For longer periods of storage, store at 20°C. Avoid repeat freeze-thaw cycles.
Precautions	CCNDBP1 antibody - middle region is for research use only and not for use in diagnostic or therapeutic procedures.

Protein Information

Name	CCNDBP1
Synonyms	DIP1, GCIP, HHM
Function	May negatively regulate cell cycle progression. May act at least in part via inhibition of the cyclin-D1/CDK4 complex, thereby preventing phosphorylation of RB1 and blocking E2F-dependent transcription.
Cellular Location	Cytoplasm. Nucleus.
Tissue Location	Ubiquitously expressed. Expression is down-regulated in a variety of tumor types including breast, colon, prostate and rectal tumors, and is up-regulated

in certain hepatic carcinomas

Images



WB Suggested Anti-CCNDBP1 Antibody Titration: 0.2-1
µg/ml
ELISA Titer: 1:312500
Positive Control: Human Liver

Please note: All products are 'FOR RESEARCH USE ONLY. NOT FOR USE IN DIAGNOSTIC OR THERAPEUTIC PROCEDURES'.