

# HOM-TES-103 antibody - C-terminal region

Rabbit Polyclonal Antibody

Catalog # AI13793

## Product Information

---

<b>Application</b>	WB
<b>Primary Accession</b>	<a href="#">Q0D2I5</a>
<b>Other Accession</b>	<a href="#">NM_080731</a> , <a href="#">NP_542769</a>
<b>Reactivity</b>	Human, Mouse, Rat, Rabbit, Pig, Dog, Guinea Pig, Horse, Bovine
<b>Predicted</b>	Human, Mouse, Rat, Rabbit, Pig, Dog, Guinea Pig, Horse, Bovine
<b>Host</b>	Rabbit
<b>Clonality</b>	Polyclonal
<b>Calculated MW</b>	61979

## Additional Information

---

<b>Gene ID</b>	25900
<b>Alias Symbol</b> <b>Other Names</b>	DKFZp586I2223, FLJ20703, HOM-TES-103, IFFO, MGC117359 Intermediate filament family orphan 1, Tumor antigen HOM-TES-103, IFFO1, IFFO
<b>Format</b>	Liquid. Purified antibody supplied in 1x PBS buffer with 0.09% (w/v) sodium azide and 2% sucrose.
<b>Reconstitution &amp; Storage</b>	Add 50 ul of distilled water. Final anti-HOM-TES-103 antibody concentration is 1 mg/ml in PBS buffer with 2% sucrose. For longer periods of storage, store at 20°C. Avoid repeat freeze-thaw cycles.
<b>Precautions</b>	HOM-TES-103 antibody - C-terminal region is for research use only and not for use in diagnostic or therapeutic procedures.

## Protein Information

---

<b>Name</b>	IFFO1 ( <a href="#">HGNC:24970</a> )
<b>Synonyms</b>	IFFO
<b>Function</b>	Nuclear matrix protein involved in the immobilization of broken DNA ends and the suppression of chromosome translocation during DNA double-strand breaks (DSBs) (PubMed: <a href="#">31548606</a> ). Interacts with the nuclear lamina component LMNA, resulting in the formation of a nucleoskeleton that relocalizes to the DSB sites in a XRCC4-dependent manner and promotes the immobilization of the broken ends, thereby preventing chromosome translocation (PubMed: <a href="#">31548606</a> ). Acts as a scaffold that allows the DNA repair protein XRCC4 and LMNA to assemble into a complex at the DSB sites

(PubMed:[31548606](#)).

### Cellular Location

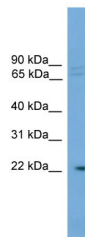
Nucleus. Nucleus, nucleoplasm. Nucleus inner membrane. Nucleus matrix.  
Note=Mainly soluble, the remaining is localized in the nuclear matrix  
(PubMed:31548606). Localized at double- strand break (DSB) sites near the  
lamina and nuclear matrix structures (PubMed:31548606).

### Tissue Location

Ubiquitously expressed.

## Images

---



WB Suggested Anti-HOM-TES-103 Antibody Titration:

0.2-1  $\mu$ g/ml

ELISA Titer: 1:62500

Positive Control: Hela cell lysate

Please note: All products are 'FOR RESEARCH USE ONLY. NOT FOR USE IN DIAGNOSTIC OR THERAPEUTIC PROCEDURES'.