

# SUSD3 antibody - N-terminal region

Rabbit Polyclonal Antibody

Catalog # AI13798

## Product Information

---

<b>Application</b>	WB
<b>Primary Accession</b>	<a href="#">Q96L08</a>
<b>Other Accession</b>	<a href="#">NM_145006</a> , <a href="#">NP_659443</a>
<b>Reactivity</b>	Human, Pig, Bovine
<b>Predicted</b>	Human, Bovine
<b>Host</b>	Rabbit
<b>Clonality</b>	Polyclonal
<b>Calculated MW</b>	27119

## Additional Information

---

<b>Gene ID</b>	203328
<b>Alias Symbol</b>	MGC26847
<b>Other Names</b>	Sushi domain-containing protein 3, SUSD3
<b>Format</b>	Liquid. Purified antibody supplied in 1x PBS buffer with 0.09% (w/v) sodium azide and 2% sucrose.
<b>Reconstitution &amp; Storage</b>	Add 50 ul of distilled water. Final anti-SUSD3 antibody concentration is 1 mg/ml in PBS buffer with 2% sucrose. For longer periods of storage, store at 20°C. Avoid repeat freeze-thaw cycles.
<b>Precautions</b>	SUSD3 antibody - N-terminal region is for research use only and not for use in diagnostic or therapeutic procedures.

## Protein Information

---

<b>Name</b>	SUSD3
<b>Function</b>	May play a role in breast tumorigenesis by promoting estrogen-dependent cell proliferation, cell-cell interactions and migration.
<b>Cellular Location</b>	Cell membrane; Single-pass membrane protein. Note=Prominently localized to cell-cell borders.
<b>Tissue Location</b>	Highly expressed in estrogen receptor-positive breast tumors.

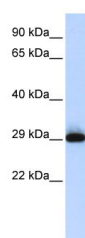
## References

---

Clark H.F.,et al.Genome Res. 13:2265-2270(2003).  
Humphray S.J.,et al.Nature 429:369-374(2004).  
Sjoebloom T.,et al.Science 314:268-274(2006).

## Images

---



WB Suggested Anti-SUSD3 Antibody Titration: 0.2-1 µg/ml  
ELISA Titer: 1:12500  
Positive Control: Human Placenta

Please note: All products are 'FOR RESEARCH USE ONLY. NOT FOR USE IN DIAGNOSTIC OR THERAPEUTIC PROCEDURES'.