

# Nap1I5 antibody - middle region

Rabbit Polyclonal Antibody

Catalog # AI13821

## Product Information

---

<b>Application</b>	WB
<b>Primary Accession</b>	<a href="#">Q9JIF0</a>
<b>Other Accession</b>	<a href="#">NM_021432</a> , <a href="#">NP_067407</a>
<b>Reactivity</b>	Human, Mouse, Rat, Pig, Dog, Horse, Bovine
<b>Predicted</b>	Human, Pig, Dog, Horse
<b>Host</b>	Rabbit
<b>Clonality</b>	Polyclonal
<b>Calculated MW</b>	17024

## Additional Information

---

<b>Gene ID</b>	58243
<b>Alias Symbol</b>	1110020M21Rik
<b>Other Names</b>	Nucleosome assembly protein 1-like 5, Nap1I5
<b>Format</b>	Liquid. Purified antibody supplied in 1x PBS buffer with 0.09% (w/v) sodium azide and 2% sucrose.
<b>Reconstitution &amp; Storage</b>	Add 50 ul of distilled water. Final anti-Nap1I5 antibody concentration is 1 mg/ml in PBS buffer with 2% sucrose. For longer periods of storage, store at 20°C. Avoid repeat freeze-thaw cycles.
<b>Precautions</b>	Nap1I5 antibody - middle region is for research use only and not for use in diagnostic or therapeutic procedures.

## Protein Information

---

<b>Name</b>	Nap1I5
<b>Cellular Location</b>	Nucleus.

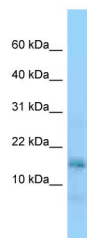
## References

---

Osada N., et al. Submitted (APR-2000) to the EMBL/GenBank/DDBJ databases.

## Images

---



WB Suggested Anti-Nap115 Antibody Titration: 1.0 µg/ml  
Positive Control: Mouse Small Intestine

Please note: All products are 'FOR RESEARCH USE ONLY. NOT FOR USE IN DIAGNOSTIC OR THERAPEUTIC PROCEDURES'.