

C9orf75 antibody - middle region

Rabbit Polyclonal Antibody

Catalog # AI13838

Product Information

Application	WB
Primary Accession	Q4KMQ1
Other Accession	NM_173691 , NP_775962
Reactivity	Human, Mouse, Rat, Dog, Guinea Pig, Horse, Bovine
Predicted	Human, Mouse, Rat, Bovine
Host	Rabbit
Clonality	Polyclonal
Calculated MW	75556

Additional Information

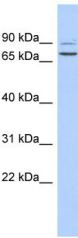
Gene ID	286262
Alias Symbol Other Names	FLJ90254, MGC131933, RP11-350O14.7, DFNB79, C9orf75 Taperin, TPRN, C9orf75
Format	Liquid. Purified antibody supplied in 1x PBS buffer with 0.09% (w/v) sodium azide and 2% sucrose.
Reconstitution & Storage	Add 50 ul of distilled water. Final anti-C9orf75 antibody concentration is 1 mg/ml in PBS buffer with 2% sucrose. For longer periods of storage, store at 20°C. Avoid repeat freeze-thaw cycles.
Precautions	C9orf75 antibody - middle region is for research use only and not for use in diagnostic or therapeutic procedures.

Protein Information

Name	TPRN
Synonyms	C9orf75
Function	Essential for hearing (By similarity). Required for maintenance of stereocilia on both inner and outer hair cells (By similarity). Necessary for the integrity of the stereociliary rootlet (By similarity). May act as an actin cytoskeleton regulator involved in the regulation of actin dynamics at the pointed end in hair cells (By similarity). Forms rings at the base of stereocilia and binds actin filaments in the stereocilia which may stabilize the stereocilia (By similarity). Acts as a strong inhibitor of PPP1CA phosphatase activity (PubMed: 23213405). Recruited to sites of DNA damage and may play a role in DNA damage repair (PubMed: 23213405).

Cellular Location	Cell projection, stereocilium {ECO:0000250 UniProtKB:A2AI08}. Cell projection, microvillus {ECO:0000250 UniProtKB:A2AI08}. Nucleus, nucleoplasm. Cytoplasm Note=Localized prominently at the basal taper region of hair cell stereocilia (By similarity). Forms organized ring-like structures with diameters ranging from 150 to 200 nm in the stereocilium taper region (By similarity). Detected in microvilli of inner hair cell supporting cells (By similarity). Predominantly nuclear in non-stereocilium cells but can shuttle between the nucleus and the cytoplasm (PubMed:23213405). {ECO:0000250 UniProtKB:A2AI08, ECO:0000269 PubMed:23213405}
Tissue Location	Expression is detected in fetal cochlea.

Images



WB Suggested Anti-C9orf75 Antibody Titration: 0.2-1 µg/ml
 ELISA Titer: 1:1562500
 Positive Control: Human heart

Please note: All products are 'FOR RESEARCH USE ONLY. NOT FOR USE IN DIAGNOSTIC OR THERAPEUTIC PROCEDURES'.