

# Harbi1 antibody - N-terminal region

Rabbit Polyclonal Antibody

Catalog # AI13841

## Product Information

---

<b>Application</b>	WB
<b>Primary Accession</b>	<a href="#">Q8BR93</a>
<b>Other Accession</b>	<a href="#">NM_178724</a> , <a href="#">NP_848839</a>
<b>Reactivity</b>	Human, Mouse, Rat, Rabbit, Pig, Dog, Guinea Pig, Horse, Bovine
<b>Predicted</b>	Human, Mouse, Rat, Rabbit, Pig, Chicken, Dog, Horse
<b>Host</b>	Rabbit
<b>Clonality</b>	Polyclonal
<b>Calculated MW</b>	38713

## Additional Information

---

<b>Gene ID</b>	241547
<b>Alias Symbol</b>	D230010M03Rik, RP23-12H6.3
<b>Other Names</b>	Putative nuclease HARBI1, 3.1.-., Harbinger transposase-derived nuclease, Harbi1
<b>Format</b>	Liquid. Purified antibody supplied in 1x PBS buffer with 0.09% (w/v) sodium azide and 2% sucrose.
<b>Reconstitution &amp; Storage</b>	Add 50 ul of distilled water. Final anti-Harbi1 antibody concentration is 1 mg/ml in PBS buffer with 2% sucrose. For longer periods of storage, store at 20°C. Avoid repeat freeze-thaw cycles.
<b>Precautions</b>	Harbi1 antibody - N-terminal region is for research use only and not for use in diagnostic or therapeutic procedures.

## Protein Information

---

<b>Name</b>	Harbi1
<b>Function</b>	Transposase-derived protein that may have nuclease activity (Potential). Does not have transposase activity (By similarity).
<b>Cellular Location</b>	Nucleus. Cytoplasm. Note=Interaction with NAIF1 promotes translocation to the nucleus
<b>Tissue Location</b>	Detected in adult brain, eye, nerve tissue and lung. Detected in embryo.

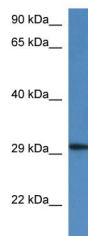
## References

---

Carninci P.,et al.Science 309:1559-1563(2005).  
Church D.M.,et al.PLoS Biol. 7:E1000112-E1000112(2009).  
Kapitonov V.V.,et al.DNA Cell Biol. 23:311-324(2004).

## Images

---



WB Suggested Anti-Harbi1 Antibody Titration: 1.0 µg/ml  
Positive Control: Mouse Kidney

Please note: All products are 'FOR RESEARCH USE ONLY. NOT FOR USE IN DIAGNOSTIC OR THERAPEUTIC PROCEDURES'.