

# Cyp4x1 Antibody - C-terminal region

Rabbit Polyclonal Antibody

Catalog # AI13848

## Product Information

Application	WB
Primary Accession	<a href="#">Q6A152</a>
Other Accession	<a href="#">NM_001003947</a> , <a href="#">NP_001003947</a>
Reactivity	Human, Mouse, Rat, Rabbit, Dog, Guinea Pig, Horse
Predicted	Human, Mouse, Rat, Rabbit, Pig, Dog, Guinea Pig, Horse
Host	Rabbit
Clonality	Polyclonal
Calculated MW	58557

## Additional Information

Gene ID	81906
Alias Symbol	A230025G20, CYP_a, Cyp4a28-ps
Other Names	Cytochrome P450 4X1, 1.14.14.1, CYP4X1, Cyp4x1
Format	Liquid. Purified antibody supplied in 1x PBS buffer with 0.09% (w/v) sodium azide and 2% sucrose.
Reconstitution & Storage	Add 50 ul of distilled water. Final anti-Cyp4x1 antibody concentration is 1 mg/ml in PBS buffer with 2% sucrose. For longer periods of storage, store at 20°C. Avoid repeat freeze-thaw cycles.
Precautions	Cyp4x1 Antibody - C-terminal region is for research use only and not for use in diagnostic or therapeutic procedures.

## Protein Information

Name	Cyp4x1 {ECO:0000303   PubMed:16478468, ECO:0000312   MGI:MGI:1932403}
Function	A cytochrome P450 monooxygenase that selectively catalyzes the epoxidation of the last double bond of the arachidonoyl moiety of anandamide, potentially modulating endocannabinoid signaling. Has no hydroxylase activity toward various fatty acids, steroids and prostaglandins. Mechanistically, uses molecular oxygen inserting one oxygen atom into a substrate, and reducing the second into a water molecule, with two electrons provided by NADPH via cytochrome P450 reductase (CPR; NADPH-ferrihemoprotein reductase).
Cellular Location	Endoplasmic reticulum membrane; Single-pass membrane protein. Microsome membrane; Single-pass membrane protein

## Tissue Location

Expressed in brain and aorta. In the brain, expressed in the Purkinje cells of the cerebellum, pyramidal neurons in the dentate gyrus of the hippocampus, cortical forebrain neurons and those of brain stem nuclei (at protein level). In addition to neurons, also expressed in cerebral vascular endothelial cells (at protein level). Also expressed in epithelial cells of the choroid plexus (at protein level). Hardly detectable in heart, lung, kidney and spleen

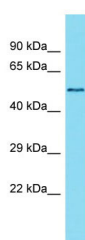
## References

---

Al-Anizy M.,et al.FEBS J. 273:936-947(2006).  
Church D.M.,et al.PLoS Biol. 7:E1000112-E1000112(2009).  
Carninci P.,et al.Science 309:1559-1563(2005).

## Images

---



Host: Rabbit  
Target Name: Cyp4x1  
Sample Tissue: Mouse Thymus lysates  
Antibody Dilution: 1.0µg/ml

Please note: All products are 'FOR RESEARCH USE ONLY. NOT FOR USE IN DIAGNOSTIC OR THERAPEUTIC PROCEDURES'.