

# Tmem102 antibody - N-terminal region

Rabbit Polyclonal Antibody

Catalog # AI13849

## Product Information

---

<b>Application</b>	WB
<b>Primary Accession</b>	<a href="#">Q3UPR7</a>
<b>Other Accession</b>	<a href="#">NM_001033433</a> , <a href="#">NP_001028605</a>
<b>Reactivity</b>	Human, Mouse, Rat, Rabbit, Pig, Dog, Guinea Pig, Horse, Bovine
<b>Predicted</b>	Rat, Rabbit, Dog, Guinea Pig, Horse
<b>Host</b>	Rabbit
<b>Clonality</b>	Polyclonal
<b>Calculated MW</b>	54923

## Additional Information

---

<b>Gene ID</b>	380705
<b>Alias Symbol</b>	4632403M07Rik, Cbap, Tmem102-ps
<b>Other Names</b>	Transmembrane protein 102, Tmem102
<b>Format</b>	Liquid. Purified antibody supplied in 1x PBS buffer with 0.09% (w/v) sodium azide and 2% sucrose.
<b>Reconstitution &amp; Storage</b>	Add 50 ul of distilled water. Final anti-Tmem102 antibody concentration is 1 mg/ml in PBS buffer with 2% sucrose. For longer periods of storage, store at 20°C. Avoid repeat freeze-thaw cycles.
<b>Precautions</b>	Tmem102 antibody - N-terminal region is for research use only and not for use in diagnostic or therapeutic procedures.

## Protein Information

---

<b>Name</b>	Tmem102
<b>Function</b>	Selectively involved in CSF2 deprivation-induced apoptosis via a mitochondria-dependent pathway.
<b>Cellular Location</b>	Cell membrane; Single-pass membrane protein. Note=Also located in intracellular compartments

## References

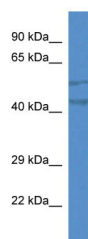
---

Carninci P., et al. Science 309:1559-1563(2005).

Church D.M.,et al.PLoS Biol. 7:E1000112-E1000112(2009).  
Villen J.,et al.Proc. Natl. Acad. Sci. U.S.A. 104:1488-1493(2007).

## Images

---



WB Suggested Anti-Tmem102 Antibody Titration: 1.0  
 $\mu\text{g/ml}$   
Positive Control: Mouse liver

Please note: All products are 'FOR RESEARCH USE ONLY. NOT FOR USE IN DIAGNOSTIC OR THERAPEUTIC PROCEDURES'.