

C14orf177 antibody - N-terminal region

Rabbit Polyclonal Antibody

Catalog # AI13859

Product Information

Application	WB
Primary Accession	Q52M58
Other Accession	NM_182560 , NP_872366
Reactivity	Human
Predicted	Human
Host	Rabbit
Clonality	Polyclonal
Calculated MW	13861

Additional Information

Alias Symbol	FLJ25773
Other Names	Putative uncharacterized protein C14orf177, C14orf177
Format	Liquid. Purified antibody supplied in 1x PBS buffer with 0.09% (w/v) sodium azide and 2% sucrose.
Reconstitution & Storage	Add 50 ul of distilled water. Final anti-C14orf177 antibody concentration is 1 mg/ml in PBS buffer with 2% sucrose. For longer periods of storage, store at 20°C. Avoid repeat freeze-thaw cycles.
Precautions	C14orf177 antibody - N-terminal region is for research use only and not for use in diagnostic or therapeutic procedures.

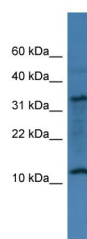
Protein Information

Name	LINC02914 (HGNC:26375)
Synonyms	C14orf177
Function	May play a role in the flagellum biology.
Cellular Location	Cytoplasm. Nucleus. Cell projection, cilium, flagellum. Note=Detected in the cytoplasm of germ cells in all stages of development up to the cytoplasmic lobes of elongated spermatids, whereas it appeared stronger in the nucleus of premeiotic and meiotic germ cells. Localizes in the headpiece and midpiece of ejaculated sperm.
Tissue Location	Expressed in testes and ejaculated spermatozoa (at protein level).

References

Ota T.,et al.Nat. Genet. 36:40-45(2004).

Images



WB Suggested Anti-C14orf177 Antibody Titration: 0.2-1
µg/ml
ELISA Titer: 1:312500
Positive Control: 721_B cell lysate

Please note: All products are 'FOR RESEARCH USE ONLY. NOT FOR USE IN DIAGNOSTIC OR THERAPEUTIC PROCEDURES'.