

# NHLRC2 antibody - N-terminal region

Rabbit Polyclonal Antibody

Catalog # AI13870

## Product Information

---

<b>Application</b>	WB
<b>Primary Accession</b>	<a href="#">Q8NBF2</a>
<b>Other Accession</b>	<a href="#">NM_198514</a> , <a href="#">NP_940916</a>
<b>Reactivity</b>	Human, Mouse, Rat, Zebrafish, Pig, Dog, Guinea Pig, Horse, Bovine
<b>Predicted</b>	Mouse, Rat, Pig, Chicken, Dog, Horse
<b>Host</b>	Rabbit
<b>Clonality</b>	Polyclonal
<b>Calculated MW</b>	79444

## Additional Information

---

<b>Gene ID</b>	374354
<b>Alias Symbol</b> <b>Other Names</b>	DKFZp779F115, FLJ20147, FLJ25621, FLJ33312, MGC45492 NHL repeat-containing protein 2, NHLRC2
<b>Format</b>	Liquid. Purified antibody supplied in 1x PBS buffer with 0.09% (w/v) sodium azide and 2% sucrose.
<b>Reconstitution &amp; Storage</b>	Add 50 ul of distilled water. Final anti-NHLRC2 antibody concentration is 1 mg/ml in PBS buffer with 2% sucrose. For longer periods of storage, store at 20°C. Avoid repeat freeze-thaw cycles.
<b>Precautions</b>	NHLRC2 antibody - N-terminal region is for research use only and not for use in diagnostic or therapeutic procedures.

## Protein Information

---

<b>Name</b>	NHLRC2
<b>Function</b>	Required for normal embryonic development.
<b>Cellular Location</b>	Cytoplasm, cytosol.
<b>Tissue Location</b>	Ubiquitous. Detected in heart, kidney, muscle, brain, lung, liver and in skin fibroblasts (at protein level)

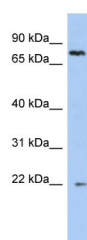
## References

---

Ota T.,et al.Nat. Genet. 36:40-45(2004).  
Deloukas P.,et al.Nature 429:375-381(2004).  
Burkard T.R.,et al.BMC Syst. Biol. 5:17-17(2011).

## Images

---



WB Suggested Anti-NHLRC2 Antibody Titration: 0.2-1  
 $\mu\text{g/ml}$   
ELISA Titer: 1:1562500  
Positive Control: 721\_B cell lysate

Please note: All products are 'FOR RESEARCH USE ONLY. NOT FOR USE IN DIAGNOSTIC OR THERAPEUTIC PROCEDURES'.