

Ier5l antibody - C-terminal region

Rabbit Polyclonal Antibody

Catalog # AI13883

Product Information

Application	WB
Primary Accession	Q99J55
Other Accession	NM_030244 , NP_084520
Reactivity	Human, Mouse, Rat, Dog, Guinea Pig, Bovine
Predicted	Human, Mouse, Rat, Dog, Guinea Pig, Bovine
Host	Rabbit
Clonality	Polyclonal
Calculated MW	42530

Additional Information

Gene ID	72500
Alias Symbol	2610524G09Rik
Other Names	Immediate early response gene 5-like protein, Ier5l
Format	Liquid. Purified antibody supplied in 1x PBS buffer with 0.09% (w/v) sodium azide and 2% sucrose.
Reconstitution & Storage	Add 50 ul of distilled water. Final anti-Ier5l antibody concentration is 1 mg/ml in PBS buffer with 2% sucrose. For longer periods of storage, store at 20°C. Avoid repeat freeze-thaw cycles.
Precautions	Ier5l antibody - C-terminal region is for research use only and not for use in diagnostic or therapeutic procedures.

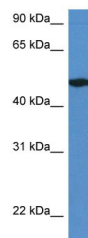
Protein Information

Name	Ier5l
-------------	-------

References

Carninci P., et al. Science 309:1559-1563(2005).
Church D.M., et al. PLoS Biol. 7:E1000112-E1000112(2009).

Images



WB Suggested Anti-Ier5l Antibody Titration: 1.0 µg/ml
Positive Control: Mouse Pancreas

Please note: All products are 'FOR RESEARCH USE ONLY. NOT FOR USE IN DIAGNOSTIC OR THERAPEUTIC PROCEDURES'.