

IER5L antibody - middle region

Rabbit Polyclonal Antibody

Catalog # AI13884

Product Information

Application	WB
Primary Accession	Q5T953
Other Accession	NM_203434 , NP_982258
Reactivity	Human, Mouse, Rat, Dog, Guinea Pig, Bovine
Predicted	Human, Mouse, Rat, Dog, Guinea Pig, Bovine
Host	Rabbit
Clonality	Polyclonal
Calculated MW	42109

Additional Information

Gene ID	389792
Alias Symbol	MGC70833, bA247A12.2
Other Names	Immediate early response gene 5-like protein, IER5L
Format	Liquid. Purified antibody supplied in 1x PBS buffer with 0.09% (w/v) sodium azide and 2% sucrose.
Reconstitution & Storage	Add 50 ul of distilled water. Final anti-IER5L antibody concentration is 1 mg/ml in PBS buffer with 2% sucrose. For longer periods of storage, store at 20°C. Avoid repeat freeze-thaw cycles.
Precautions	IER5L antibody - middle region is for research use only and not for use in diagnostic or therapeutic procedures.

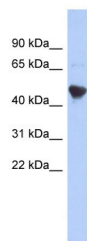
Protein Information

Name	IER5L
-------------	-------

References

Humphray S.J., et al. Nature 429:369-374(2004).
Mural R.J., et al. Submitted (JUL-2005) to the EMBL/GenBank/DDBJ databases.

Images



WB Suggested Anti-IER5L Antibody Titration: 0.2-1 µg/ml

ELISA Titer: 1:1562500

Positive Control: NCI-H226 cell lysate

Please note: All products are 'FOR RESEARCH USE ONLY. NOT FOR USE IN DIAGNOSTIC OR THERAPEUTIC PROCEDURES'.