

FLJ35767 antibody - middle region

Rabbit Polyclonal Antibody

Catalog # AI13889

Product Information

Application	WB
Primary Accession	Q8NA77
Other Accession	NM_207459 , NP_997342
Reactivity	Human, Mouse, Rat, Bovine
Predicted	Human, Mouse, Rat, Bovine
Host	Rabbit
Clonality	Polyclonal
Calculated MW	18469

Additional Information

Gene ID	400629
Other Names	Testis-expressed sequence 19 protein, TEX19
Format	Liquid. Purified antibody supplied in 1x PBS buffer with 0.09% (w/v) sodium azide and 2% sucrose.
Reconstitution & Storage	Add 50 ul of distilled water. Final anti-FLJ35767 antibody concentration is 1 mg/ml in PBS buffer with 2% sucrose. For longer periods of storage, store at 20°C. Avoid repeat freeze-thaw cycles.
Precautions	FLJ35767 antibody - middle region is for research use only and not for use in diagnostic or therapeutic procedures.

Protein Information

Name	TEX19
Function	Required during spermatogenesis and placenta development, participating in the repression of retrotransposable elements and prevent their mobilization. Collaborates with the Piwi-interacting RNA (piRNA) pathway, which mediates the repression of transposable elements during meiosis by forming complexes composed of piRNAs and Piwi proteins. Interacts with Piwi proteins and directly binds piRNAs, a class of 24 to 30 nucleotide RNAs that are generated by a Dicer- independent mechanism and are primarily derived from transposons and other repeated sequence elements. Also during spermatogenesis, promotes, with UBR2, SPO11-dependent recombination foci to accumulate and drive robust homologous chromosome synapsis (By similarity). Interacts with LINE-1 retrotransposon encoded LIRE1, stimulates LIRE1 polyubiquitination, mediated by UBR2, and degradation, inhibiting

LINE- 1 retrotransposon mobilization (PubMed:[28806172](#)).

Cellular Location

Cytoplasm {ECO:0000250|UniProtKB:Q99MV2}. Note=Was initially reported to localize in the nucleus. However, it was later shown to localize in cytoplasm only. Cytoplasmic localization is distinct from the meiotic nuage, also named P granule, a germ-cell- specific organelle required to repress transposon activity during meiosis. {ECO:0000250|UniProtKB:Q99MV2}

Tissue Location

Expressed in testis. Expressed in undifferentiated embryonic stem cells.

References

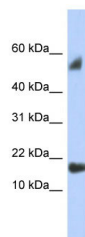
Ota T.,et al.Nat. Genet. 36:40-45(2004).

Mural R.J.,et al.Submitted (JUL-2005) to the EMBL/GenBank/DDBJ databases.

Kuntz S.,et al.Stem Cells 26:734-744(2008).

Bayne R.A.,et al.J. Androl. 29:389-403(2008).

Images



WB Suggested Anti-FLJ35767 Antibody Titration: 0.2-1
µg/ml
ELISA Titer: 1:1562500
Positive Control: Human Placenta

Please note: All products are 'FOR RESEARCH USE ONLY. NOT FOR USE IN DIAGNOSTIC OR THERAPEUTIC PROCEDURES'.