

# Blmh Antibody - C-terminal region

Rabbit Polyclonal Antibody

Catalog # AI13902

## Product Information

<b>Application</b>	WB
<b>Primary Accession</b>	<a href="#">Q8R016</a>
<b>Other Accession</b>	<a href="#">NM_178645</a> , <a href="#">NP_848760</a>
<b>Reactivity</b>	Human, Mouse, Rat, Rabbit, Zebrafish, Dog, Guinea Pig, Horse, Bovine
<b>Predicted</b>	Human, Mouse, Rat, Rabbit, Zebrafish, Pig, Dog, Guinea Pig, Horse, Bovine
<b>Host</b>	Rabbit
<b>Clonality</b>	Polyclonal
<b>Calculated MW</b>	52511

## Additional Information

<b>Gene ID</b>	104184
<b>Alias Symbol</b>	AI035728, Bh, Bmh
<b>Other Names</b>	Bleomycin hydrolase, BH, BLM hydrolase, BMH, 3.4.22.40, Blmh
<b>Format</b>	Liquid. Purified antibody supplied in 1x PBS buffer with 0.09% (w/v) sodium azide and 2% sucrose.
<b>Reconstitution &amp; Storage</b>	Add 50 ul of distilled water. Final anti-Blmh antibody concentration is 1 mg/ml in PBS buffer with 2% sucrose. For longer periods of storage, store at 20°C. Avoid repeat freeze-thaw cycles.
<b>Precautions</b>	Blmh Antibody - C-terminal region is for research use only and not for use in diagnostic or therapeutic procedures.

## Protein Information

<b>Name</b>	Blmh
<b>Function</b>	The normal physiological role of BLM hydrolase is unknown, but it catalyzes the inactivation of the antitumor drug BLM (a glycopeptide) by hydrolyzing the carboxamide bond of its B- aminoalaninamide moiety thus protecting normal and malignant cells from BLM toxicity.
<b>Cellular Location</b>	Cytoplasm {ECO:0000250 UniProtKB:Q13867}. Cytoplasmic granule {ECO:0000250 UniProtKB:Q13867}. Note=Co-localizes with NUDT12 in the cytoplasmic granules {ECO:0000250 UniProtKB:Q13867}

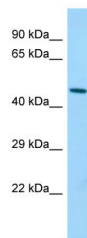
## References

---

Carninci P.,et al.Science 309:1559-1563(2005).  
Church D.M.,et al.PLoS Biol. 7:E1000112-E1000112(2009).  
Park J.,et al.Mol. Cell 50:919-930(2013).

## Images

---



Host: Rabbit  
Target Name: Blmh  
Sample Tissue: Mouse Stomach lysates  
Antibody Dilution: 1.0µg/ml

Please note: All products are 'FOR RESEARCH USE ONLY. NOT FOR USE IN DIAGNOSTIC OR THERAPEUTIC PROCEDURES'.