

DDI1 antibody - middle region

Rabbit Polyclonal Antibody

Catalog # AI13906

Product Information

Application	WB
Primary Accession	Q8WTU0
Other Accession	NM_001001711 , NP_001001711
Reactivity	Human
Predicted	Human
Host	Rabbit
Clonality	Polyclonal
Calculated MW	44124

Additional Information

Gene ID	414301
Alias Symbol	FLJ36017
Other Names	Protein DDI1 homolog 1, DDI1
Format	Liquid. Purified antibody supplied in 1x PBS buffer with 0.09% (w/v) sodium azide and 2% sucrose.
Reconstitution & Storage	Add 50 ul of distilled water. Final anti-DDI1 antibody concentration is 1 mg/ml in PBS buffer with 2% sucrose. For longer periods of storage, store at 20°C. Avoid repeat freeze-thaw cycles.
Precautions	DDI1 antibody - middle region is for research use only and not for use in diagnostic or therapeutic procedures.

Protein Information

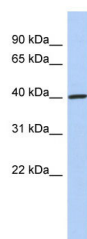
Name	DDI1
Function	Probable aspartic protease (Probable). Seems to act as a proteasomal shuttle which links the proteasome and replication fork proteins like RTF2 (Probable). Required, with DDI2, for cellular survival following replication stress. Together or redundantly with DDI2, removes RTF2 from stalled forks to allow cell cycle progression after replication stress and maintains genome integrity (PubMed: 29290612).

References

Ota T.,et al.Nat. Genet. 36:40-45(2004).

Guo J.H.,et al.Submitted (OCT-2001) to the EMBL/GenBank/DDBJ databases.

Images



WB Suggested Anti-DDI1 Antibody Titration: 0.2-1 µg/ml

ELISA Titer: 1:62500

Positive Control: Human Placenta

Please note: All products are 'FOR RESEARCH USE ONLY. NOT FOR USE IN DIAGNOSTIC OR THERAPEUTIC PROCEDURES'.