

MTMR12 antibody - middle region

Rabbit Polyclonal Antibody

Catalog # AI13924

Product Information

Application	WB
Primary Accession	Q9C0I1
Other Accession	NM_001040446 , NP_001035536
Reactivity	Human, Mouse, Rat, Rabbit, Dog, Guinea Pig, Horse, Bovine
Predicted	Rabbit, Pig, Dog, Guinea Pig, Horse, Bovine
Host	Rabbit
Clonality	Polyclonal
Calculated MW	86148

Additional Information

Gene ID	54545
Alias Symbol	3-PAP, PIP3AP
Other Names	Myotubularin-related protein 12, Phosphatidylinositol 3 phosphate 3-phosphatase adapter subunit, 3-PAP, 3-phosphatase adapter protein, MTMR12, KIAA1682, PIP3AP
Format	Liquid. Purified antibody supplied in 1x PBS buffer with 0.09% (w/v) sodium azide and 2% sucrose.
Reconstitution & Storage	Add 50 ul of distilled water. Final anti-MTMR12 antibody concentration is 1 mg/ml in PBS buffer with 2% sucrose. For longer periods of storage, store at 20°C. Avoid repeat freeze-thaw cycles.
Precautions	MTMR12 antibody - middle region is for research use only and not for use in diagnostic or therapeutic procedures.

Protein Information

Name	MTMR12
Synonyms	KIAA1682, PIP3AP
Function	Acts as an adapter for the myotubularin-related phosphatases (PubMed: 11504939 , PubMed: 12847286 , PubMed: 23818870). Regulates phosphatase MTM1 protein stability and possibly its intracellular location (PubMed: 23818870). By stabilizing MTM1 protein levels, required for skeletal muscle maintenance but not for myogenesis (By similarity).
Cellular Location	Cytoplasm. Sarcoplasmic reticulum {ECO:0000250 UniProtKB:Q80TA6}.

Cytoplasm, myofibril, sarcomere {ECO:0000250|UniProtKB:Q80TA6}.
Note=Localizes to punctate vesicles when associated with MTM1
(PubMed:12847286) Localizes to triads, a structure formed by a T tubule and
two sarcoplasmic reticulum terminal cisterna (By similarity). In skeletal
muscles, co-localizes with MTM1 in the sarcomere (By similarity) Partially
localizes to the sarcoplasmic reticulum in skeletal muscles (By similarity).
{ECO:0000250|UniProtKB:Q80TA6, ECO:0000269|PubMed:12847286}

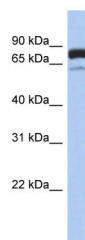
Tissue Location

Expressed in skeletal muscles (at protein level) (PubMed:23818870).
Ubiquitous with prominent expression in brain, heart, kidney, placenta, and
lung (PubMed:11504939)

References

Nandurkar H.H.,et al.Proc. Natl. Acad. Sci. U.S.A. 98:9499-9504(2001).
Nagase T.,et al.DNA Res. 7:347-355(2000).
Ota T.,et al.Nat. Genet. 36:40-45(2004).
Bechtel S.,et al.BMC Genomics 8:399-399(2007).
Nandurkar H.H.,et al.Proc. Natl. Acad. Sci. U.S.A. 100:8660-8665(2003).

Images



WB Suggested Anti-MTMR12 Antibody Titration: 0.2-1
µg/ml
ELISA Titer: 1:1562500
Positive Control: Human brain

Please note: All products are 'FOR RESEARCH USE ONLY. NOT FOR USE IN DIAGNOSTIC OR THERAPEUTIC PROCEDURES'.