

PAFAH1B3 antibody - middle region

Rabbit Polyclonal Antibody

Catalog # AI13937

Product Information

Application	WB
Primary Accession	Q15102
Other Accession	NM_014226 , NP_002564
Reactivity	Human, Mouse, Rat, Rabbit, Pig, Dog, Guinea Pig, Horse, Bovine
Predicted	Mouse, Dog, Guinea Pig
Host	Rabbit
Clonality	Polyclonal
Calculated MW	25734

Additional Information

Gene ID	5050
Alias Symbol	PAFAHG
Other Names	Platelet-activating factor acetylhydrolase IB subunit gamma, 3.1.1.47, PAF acetylhydrolase 29 kDa subunit, PAF-AH 29 kDa subunit, PAF-AH subunit gamma, PAFAH subunit gamma, PAFAH1B3, PAFAHG
Format	Liquid. Purified antibody supplied in 1x PBS buffer with 0.09% (w/v) sodium azide and 2% sucrose.
Reconstitution & Storage	Add 50 ul of distilled water. Final anti-PAFAH1B3 antibody concentration is 1 mg/ml in PBS buffer with 2% sucrose. For longer periods of storage, store at 20°C. Avoid repeat freeze-thaw cycles.
Precautions	PAFAH1B3 antibody - middle region is for research use only and not for use in diagnostic or therapeutic procedures.

Protein Information

Name	PAFAH1B3 (HGNC:8576)
Synonyms	PAFAHG
Function	Alpha1 catalytic subunit of the cytosolic type I platelet- activating factor (PAF) acetylhydrolase (PAF-AH (I)) heterotetrameric enzyme that catalyzes the hydrolyze of the acetyl group at the sn-2 position of PAF and its analogs and modulates the action of PAF. The activity and substrate specificity of PAF-AH (I) are affected by its subunit composition. Both alpha1/alpha1 homodimer (PAFAH1B3/PAFAH1B3 homodimer) and alpha1/alpha2 heterodimer(PAFAH1B3/PAFAH1B2 heterodimer) hydrolyze

1-O-alkyl-2-acetyl-sn-glycero-3-phosphoric acid (AAGPA) more efficiently than PAF, but they have little hydrolytic activity towards 1-O-alkyl-2-acetyl-sn-glycero-3-phosphorylethanolamine (AAGPE). Plays an important role during the development of brain.

Cellular Location

Cytoplasm.

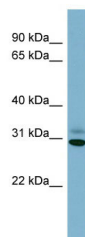
Tissue Location

In the adult, expressed in brain, skeletal muscle, kidney, thymus, spleen, colon, testis, ovary and peripheral blood leukocytes. In the fetus, highest expression occurs in brain

References

Adachi H.,et al.Biochem. Biophys. Res. Commun. 214:180-187(1995).
Ebert L.,et al.Submitted (MAY-2004) to the EMBL/GenBank/DDBJ databases.
Grimwood J.,et al.Nature 428:529-535(2004).
Mural R.J.,et al.Submitted (JUL-2005) to the EMBL/GenBank/DDBJ databases.
Lubec G.,et al.Submitted (DEC-2008) to UniProtKB.

Images



WB Suggested Anti-PAFAH1B3 Antibody Titration: 0.2-1
µg/ml
ELISA Titer: 1:1562500
Positive Control: 293T cell lysate

Please note: All products are 'FOR RESEARCH USE ONLY. NOT FOR USE IN DIAGNOSTIC OR THERAPEUTIC PROCEDURES'.