

# PGM1 antibody - middle region

Rabbit Polyclonal Antibody

Catalog # AI13940

## Product Information

---

<b>Application</b>	WB
<b>Primary Accession</b>	<a href="#">P36871</a>
<b>Other Accession</b>	<a href="#">NM_002633</a> , <a href="#">NP_002624</a>
<b>Reactivity</b>	Human, Mouse, Rat, Rabbit, Zebrafish, Goat, Dog, Guinea Pig, Horse, Bovine
<b>Predicted</b>	Human, Mouse, Rat, Rabbit, Zebrafish, Pig, Chicken, Dog, Horse, Bovine
<b>Host</b>	Rabbit
<b>Clonality</b>	Polyclonal
<b>Calculated MW</b>	61449

## Additional Information

---

<b>Gene ID</b>	5236
<b>Alias Symbol</b>	GSD14
<b>Other Names</b>	Phosphoglucomutase-1, PGM 1, 5.4.2.2, Glucose phosphomutase 1, PGM1
<b>Format</b>	Liquid. Purified antibody supplied in 1x PBS buffer with 0.09% (w/v) sodium azide and 2% sucrose.
<b>Reconstitution &amp; Storage</b>	Add 50 ul of distilled water. Final anti-PGM1 antibody concentration is 1 mg/ml in PBS buffer with 2% sucrose. For longer periods of storage, store at 20°C. Avoid repeat freeze-thaw cycles.
<b>Precautions</b>	PGM1 antibody - middle region is for research use only and not for use in diagnostic or therapeutic procedures.

## Protein Information

---

<b>Name</b>	PGM1
<b>Function</b>	Catalyzes the reversible isomerization of alpha-D-glucose 1- phosphate to alpha-D-glucose 6-phosphate (PubMed: <a href="#">15378030</a> , PubMed: <a href="#">25288802</a> ). The mechanism proceeds via the intermediate compound alpha-D-glucose 1,6-bisphosphate (Probable) (PubMed: <a href="#">25288802</a> ). This enzyme participates in both the breakdown and synthesis of glucose (PubMed: <a href="#">17924679</a> , PubMed: <a href="#">25288802</a> ).
<b>Cellular Location</b>	[Isoform 1]: Cytoplasm.

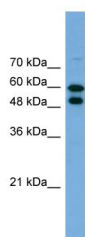
## References

---

Whitehouse D.B.,et al.Proc. Natl. Acad. Sci. U.S.A. 89:411-415(1992).  
Kalnine N.,et al.Submitted (MAY-2003) to the EMBL/GenBank/DDBJ databases.  
Ota T.,et al.Nat. Genet. 36:40-45(2004).  
Gregory S.G.,et al.Nature 441:315-321(2006).  
Putt W.,et al.Biochem. J. 296:417-422(1993).

## Images

---



WB Suggested Anti-PGM1 Antibody Titration: 1.0 µg/ml  
Positive Control: Transfected 293T

Please note: All products are 'FOR RESEARCH USE ONLY. NOT FOR USE IN DIAGNOSTIC OR THERAPEUTIC PROCEDURES'.