

PRPSAP2 Antibody - N-terminal region

Rabbit Polyclonal Antibody

Catalog # AI13945

Product Information

Application	WB
Primary Accession	O60256
Other Accession	NM_002767 , NP_002758
Reactivity	Human, Mouse, Rat, Rabbit, Zebrafish, Pig, Dog, Guinea Pig, Horse, Bovine
Predicted	Human, Mouse, Zebrafish, Pig, Chicken, Dog
Host	Rabbit
Clonality	Polyclonal
Calculated MW	40926

Additional Information

Gene ID	5636
Alias Symbol	PAP41
Other Names	Phosphoribosyl pyrophosphate synthase-associated protein 2, PRPP synthase-associated protein 2, 41 kDa phosphoribosypyrophosphate synthetase-associated protein, PAP41, PRPSAP2
Format	Liquid. Purified antibody supplied in 1x PBS buffer with 0.09% (w/v) sodium azide and 2% sucrose.
Reconstitution & Storage	Add 50 ul of distilled water. Final anti-PRPSAP2 antibody concentration is 1 mg/ml in PBS buffer with 2% sucrose. For longer periods of storage, store at 20°C. Avoid repeat freeze-thaw cycles.
Precautions	PRPSAP2 Antibody - N-terminal region is for research use only and not for use in diagnostic or therapeutic procedures.

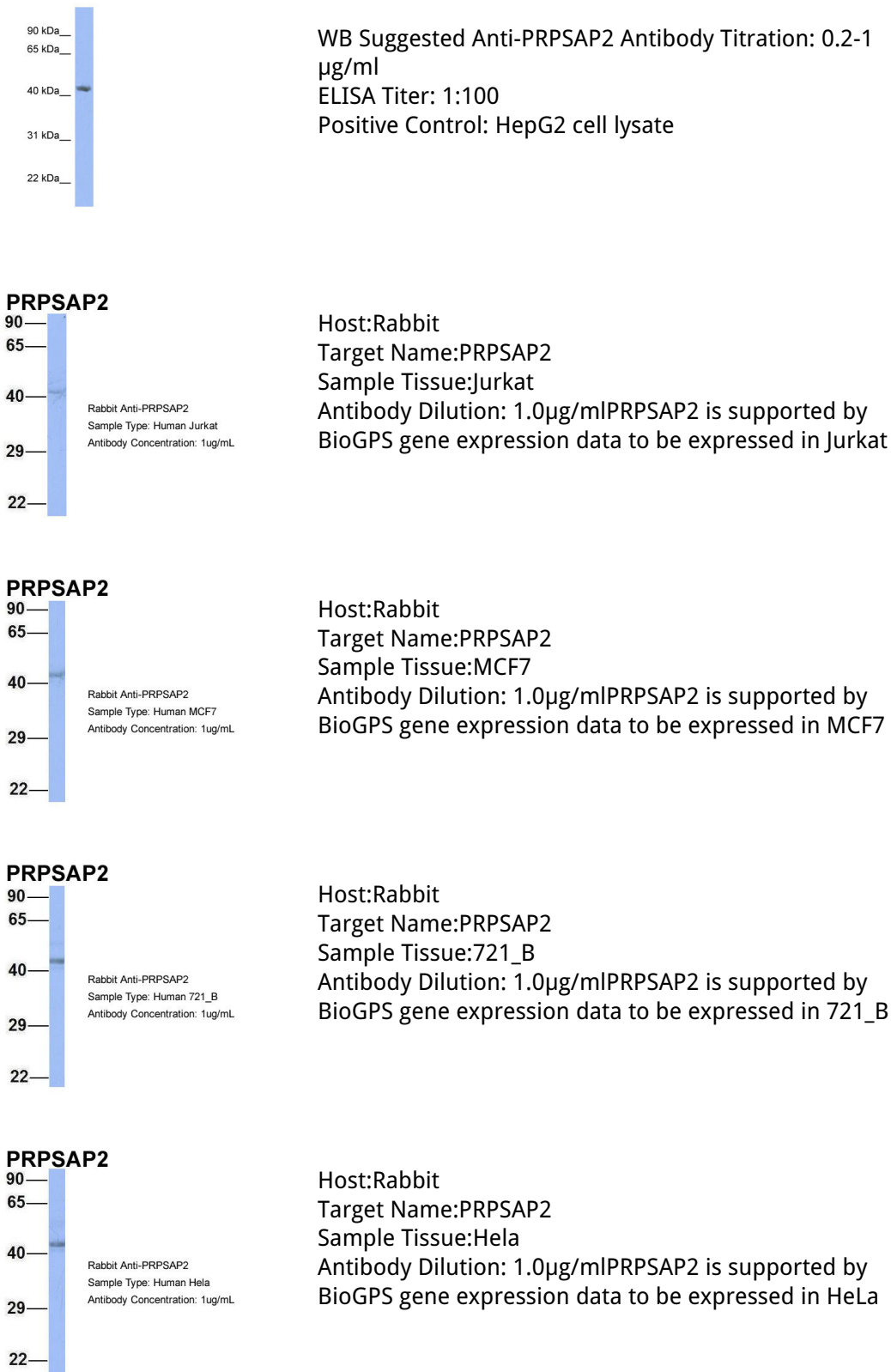
Protein Information

Name	PRPSAP2
Function	Seems to play a negative regulatory role in 5-phosphoribose 1-diphosphate synthesis.
Tissue Location	Ubiquitous.

References

Katashima R.,et al.Biochim. Biophys. Acta 1396:245-250(1998).
Ota T.,et al.Nat. Genet. 36:40-45(2004).
Ebert L.,et al.Submitted (JUN-2004) to the EMBL/GenBank/DDBJ databases.
Zody M.C.,et al.Nature 440:1045-1049(2006).
Bienvenut W.V.,et al.Submitted (MAR-2009) to UniProtKB.

Images



PRPSAP2

90
65
40
29
22

Rabbit Anti-PRPSAP2
Sample Type: Human Fetal Brain
Antibody Concentration: 1ug/mL

Host:Rabbit Target Name:PRPSAP2 Sample Tissue:Human
Fetal Brain Antibody Dilution: 1.0ug/ml

Please note: All products are 'FOR RESEARCH USE ONLY. NOT FOR USE IN DIAGNOSTIC OR THERAPEUTIC PROCEDURES'.