

Psmc1 antibody - C-terminal region

Rabbit Polyclonal Antibody

Catalog # AI13948

Product Information

Application	WB
Primary Accession	P62192
Other Accession	NM_008947 , NP_032973
Reactivity	Human, Mouse, Rat, Rabbit, Zebrafish, Pig, Dog, Guinea Pig, Horse, Bovine, Yeast
Predicted Host	Human, Mouse, Zebrafish, Pig, Chicken, Dog, Guinea Pig, Horse, Bovine
Clonality	Rabbit
Calculated MW	Polyclonal 49185

Additional Information

Gene ID	19179
Alias Symbol	AI325227, P26s4, S4
Other Names	26S protease regulatory subunit 4, P26s4, 26S proteasome AAA-ATPase subunit RPT2, Proteasome 26S subunit ATPase 1, Psmc1
Format	Liquid. Purified antibody supplied in 1x PBS buffer with 0.09% (w/v) sodium azide and 2% sucrose.
Reconstitution & Storage	Add 50 ul of distilled water. Final anti-Psmc1 antibody concentration is 1 mg/ml in PBS buffer with 2% sucrose. For longer periods of storage, store at 20°C. Avoid repeat freeze-thaw cycles.
Precautions	Psmc1 antibody - C-terminal region is for research use only and not for use in diagnostic or therapeutic procedures.

Protein Information

Name	Psmc1
Function	Component of the 26S proteasome, a multiprotein complex involved in the ATP-dependent degradation of ubiquitinated proteins. This complex plays a key role in the maintenance of protein homeostasis by removing misfolded or damaged proteins, which could impair cellular functions, and by removing proteins whose functions are no longer required. Therefore, the proteasome participates in numerous cellular processes, including cell cycle progression, apoptosis, or DNA damage repair. PSMC1 belongs to the heterohexameric ring of AAA (ATPases associated with diverse cellular activities) proteins that unfolds ubiquitinated target proteins that are concurrently translocated into a

proteolytic chamber and degraded into peptides.

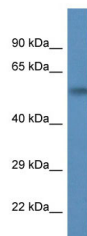
Cellular Location

Cytoplasm. Nucleus. Membrane {ECO:0000250|UniProtKB:P62191};
Lipid-anchor {ECO:0000250|UniProtKB:P62191}

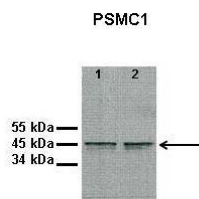
References

Hoyle J.,et al.Genomics 31:115-118(1996).
Park H.,et al.Proc. Natl. Acad. Sci. U.S.A. 98:11163-11168(2001).
Katiyar S.,et al.Proc. Natl. Acad. Sci. U.S.A. 101:13774-13779(2004).
Li G.,et al.Proc. Natl. Acad. Sci. U.S.A. 102:15809-15814(2005).
Li G.,et al.Proc. Natl. Acad. Sci. U.S.A. 103:1153-1153(2006).

Images



WB Suggested Anti-Psmc1 Antibody Titration: 1.0 µg/ml
Positive Control: Mouse Brain



See Immunoblot 2 Data and customer Feedback for more Information

Lanes: 1: 10ug proteasome fraction from C57B1/6J mouse brain, 2: 10ug proteasome fraction from BLAB/C mouse brain
Primary Antibody Dilution: 1:500
Secondary Antibody: Anti-rabbit HRP
Secondary Antibody Dilution: 1:5000
Gene Name: Psmc1
Submitted by: Dr. Scott Wilson, University of Alabama at Birmingham

Please note: All products are 'FOR RESEARCH USE ONLY. NOT FOR USE IN DIAGNOSTIC OR THERAPEUTIC PROCEDURES'.