

RAB1A antibody - middle region

Rabbit Polyclonal Antibody

Catalog # AI13962

Product Information

Application	WB, IHC
Primary Accession	P62820
Other Accession	NM_004161 , NP_004152
Reactivity	Human, Mouse, Rat, Rabbit, Zebrafish, Pig, Goat, Dog, Guinea Pig, Horse, Bovine
Predicted Host	Human, Mouse, Rat, Rabbit, Pig, Chicken, Dog, Bovine
Clonality	Rabbit
Calculated MW	Polyclonal 22678

Additional Information

Gene ID	5861
Alias Symbol	DKFZP564B163, RAB1, YPT1
Other Names	Ras-related protein Rab-1A, YPT1-related protein, RAB1A, RAB1
Format	Liquid. Purified antibody supplied in 1x PBS buffer with 0.09% (w/v) sodium azide and 2% sucrose.
Reconstitution & Storage	Add 50 ul of distilled water. Final anti-RAB1A antibody concentration is 1 mg/ml in PBS buffer with 2% sucrose. For longer periods of storage, store at 20°C. Avoid repeat freeze-thaw cycles.
Precautions	RAB1A antibody - middle region is for research use only and not for use in diagnostic or therapeutic procedures.

Protein Information

Name	RAB1A
Synonyms	RAB1
Function	The small GTPases Rab are key regulators of intracellular membrane trafficking, from the formation of transport vesicles to their fusion with membranes (PubMed: 20639577 , PubMed: 20861236 , PubMed: 21303926 , PubMed: 22939626). Rabs cycle between an inactive GDP- bound form and an active GTP-bound form that is able to recruit to membranes different sets of downstream effectors directly responsible for vesicle formation, movement, tethering and fusion (PubMed: 20639577 , PubMed: 20861236 , PubMed: 21303926 , PubMed: 22939626). RAB1A regulates vesicular protein

transport from the endoplasmic reticulum (ER) to the Golgi compartment and on to the cell surface, and plays a role in IL-8 and growth hormone secretion (PubMed:[21303926](#)). Required to modulate the compacted morphology of the Golgi (PubMed:[26209634](#)). Regulates the level of CASR present at the cell membrane (PubMed:[20861236](#)). Plays a role in cell adhesion and cell migration, via its role in protein trafficking (PubMed:[20639577](#)). Plays a role in autophagosome assembly and cellular defense reactions against pathogenic bacteria (PubMed:[22939626](#)). Plays a role in microtubule-dependent protein transport by early endosomes and in anterograde melanosome transport (By similarity).

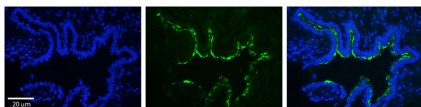
Cellular Location

Golgi apparatus. Endoplasmic reticulum. Early endosome. Cytoplasm, cytosol. Membrane. Melanosome {ECO:0000250|UniProtKB:P62821}. Note=Alternates between membrane- associated and cytosolic forms.

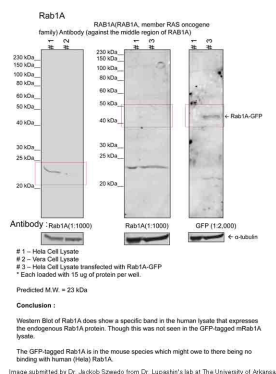
References

Zahraoui A.,et al.J. Biol. Chem. 264:12394-12401(1989).
 Wiemann S.,et al.Genome Res. 11:422-435(2001).
 Bechtel S.,et al.BMC Genomics 8:399-399(2007).
 Ota T.,et al.Nat. Genet. 36:40-45(2004).
 Puhl H.L. III,et al.Submitted (APR-2002) to the EMBL/GenBank/DDBJ databases.

Images



Rabbit Anti-RAB1A Antibody
 Catalog Number: AI13962
 Formalin Fixed Paraffin Embedded Tissue: Human
 Bronchial Epithelial Tissue Observed Staining:
 Cytoplasmic in excellent staining
 Primary Antibody
 Concentration: 1:100
 Secondary Antibody: Donkey anti-Rabbit-Cy3
 Secondary Antibody
 Concentration: 1:200
 Magnification: 20X
 Exposure Time: 0.5 - 2.0 sec



Sample Type: 1. Human Cervical Cancer cell lysate (15ug) 2. Monkey Fibroblast cell lysate (15ug) 3. Human Cervical Cancer Cell transfected with Rab1A-GFP (15ug) Primary Dilution: 1:1000
 Secondary Antibody: goat anti-Rabbit Secondary Dilution: 1:40,000 Image
 Submitted by: Dr. Jakob Szewedo, Dr. Lupashin's Lab
 University of Arkansas for Medical Sciences
 Feedback tab for detailed information.

Please note: All products are 'FOR RESEARCH USE ONLY. NOT FOR USE IN DIAGNOSTIC OR THERAPEUTIC PROCEDURES'.