

# SCO1 antibody - middle region

Rabbit Polyclonal Antibody

Catalog # AI13968

## Product Information

---

<b>Application</b>	WB
<b>Primary Accession</b>	<a href="#">O75880</a>
<b>Other Accession</b>	<a href="#">NM_004589</a> , <a href="#">NP_004580</a>
<b>Reactivity</b>	Human, Mouse, Rat, Rabbit, Pig, Dog, Guinea Pig, Horse, Bovine, Yeast
<b>Predicted</b>	Human, Mouse, Rat, Rabbit, Chicken, Horse, Bovine
<b>Host</b>	Rabbit
<b>Clonality</b>	Polyclonal
<b>Calculated MW</b>	33814

## Additional Information

---

<b>Gene ID</b>	6341
<b>Alias Symbol</b>	SCOD1
<b>Other Names</b>	Protein SCO1 homolog, mitochondrial, SCO1, SCOD1
<b>Format</b>	Liquid. Purified antibody supplied in 1x PBS buffer with 0.09% (w/v) sodium azide and 2% sucrose.
<b>Reconstitution &amp; Storage</b>	Add 50 ul of distilled water. Final anti-SCO1 antibody concentration is 1 mg/ml in PBS buffer with 2% sucrose. For longer periods of storage, store at 20°C. Avoid repeat freeze-thaw cycles.
<b>Precautions</b>	SCO1 antibody - middle region is for research use only and not for use in diagnostic or therapeutic procedures.

## Protein Information

---

<b>Name</b>	SCO1
<b>Synonyms</b>	SCOD1
<b>Function</b>	Copper metallochaperone essential for the maturation of cytochrome c oxidase subunit II (MT-CO2/COX2). Not required for the synthesis of MT-CO2/COX2 but plays a crucial role in stabilizing MT-CO2/COX2 during its subsequent maturation. Involved in transporting copper to the Cu(A) site on MT-CO2/COX2 (PubMed: <a href="#">15229189</a> , PubMed: <a href="#">15659396</a> , PubMed: <a href="#">16735468</a> , PubMed: <a href="#">17189203</a> , PubMed: <a href="#">19336478</a> ). Plays an important role in the regulation of copper homeostasis by controlling the abundance and cell membrane localization of copper transporter CTR1 (By similarity).

<b>Cellular Location</b>	Mitochondrion. Mitochondrion inner membrane; Single-pass membrane protein
<b>Tissue Location</b>	Predominantly expressed in tissues characterized by high rates of oxidative phosphorylation (OxPhos), including muscle, heart, and brain.

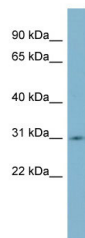
## References

---

Petruzzella V.,et al.Genomics 54:494-504(1998).  
 Horvath R.,et al.Biochem. Biophys. Res. Commun. 276:530-533(2000).  
 Peng Y.,et al.Submitted (SEP-1999) to the EMBL/GenBank/DDBJ databases.  
 Ota T.,et al.Nat. Genet. 36:40-45(2004).  
 Mural R.J.,et al.Submitted (SEP-2005) to the EMBL/GenBank/DDBJ databases.

## Images

---



WB Suggested Anti-SCO1 Antibody Titration: 0.2-1 µg/ml  
 ELISA Titer: 1:62500  
 Positive Control: Human heart

Please note: All products are 'FOR RESEARCH USE ONLY. NOT FOR USE IN DIAGNOSTIC OR THERAPEUTIC PROCEDURES'.