

SCO1 Antibody - C-terminal region

Rabbit Polyclonal Antibody

Catalog # AI13969

Product Information

Application	WB
Primary Accession	O75880
Reactivity	Human
Predicted	Human, Mouse, Rat, Rabbit, Zebrafish, Pig, Guinea Pig, Horse, Bovine
Host	Rabbit
Clonality	Polyclonal
Calculated MW	33814

Additional Information

Gene ID	6341
Alias Symbol Other Names	SCO1, SCOD1, Protein SCO1 homolog, mitochondrial, SCO1, SCOD1
Format	Liquid. Purified antibody supplied in 1x PBS buffer with 0.09% (w/v) sodium azide and 2% sucrose.
Reconstitution & Storage	Add 50 μ l of distilled water. Final Anti-SCO1 antibody concentration is 1 mg/ml in PBS buffer with 2% sucrose. For longer periods of storage, store at -20°C. Avoid repeat freeze-thaw cycles.
Precautions	SCO1 Antibody - C-terminal region is for research use only and not for use in diagnostic or therapeutic procedures.

Protein Information

Name	SCO1
Synonyms	SCOD1
Function	Copper metallochaperone essential for the maturation of cytochrome c oxidase subunit II (MT-CO2/COX2). Not required for the synthesis of MT-CO2/COX2 but plays a crucial role in stabilizing MT-CO2/COX2 during its subsequent maturation. Involved in transporting copper to the Cu(A) site on MT-CO2/COX2 (PubMed: 15229189 , PubMed: 15659396 , PubMed: 16735468 , PubMed: 17189203 , PubMed: 19336478). Plays an important role in the regulation of copper homeostasis by controlling the abundance and cell membrane localization of copper transporter CTR1 (By similarity).
Cellular Location	Mitochondrion. Mitochondrion inner membrane; Single-pass membrane

protein

Tissue Location

Predominantly expressed in tissues characterized by high rates of oxidative phosphorylation (OxPhos), including muscle, heart, and brain.

References

Petruzzella V.,et al.Genomics 54:494-504(1998).

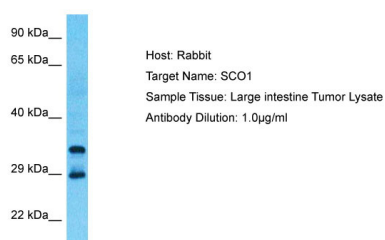
Horvath R.,et al.Biochem. Biophys. Res. Commun. 276:530-533(2000).

Peng Y.,et al.Submitted (SEP-1999) to the EMBL/GenBank/DDBJ databases.

Ota T.,et al.Nat. Genet. 36:40-45(2004).

Mural R.J.,et al.Submitted (SEP-2005) to the EMBL/GenBank/DDBJ databases.

Images



Host: Rabbit

Target Name: SCO1

Sample Tissue: Large intestine Tumor lysates

Antibody Dilution: 1.0µg/ml

Please note: All products are 'FOR RESEARCH USE ONLY. NOT FOR USE IN DIAGNOSTIC OR THERAPEUTIC PROCEDURES'.