

SERPINI2 antibody - middle region

Rabbit Polyclonal Antibody

Catalog # AI13984

Product Information

Application	WB
Primary Accession	Q9JK88
Other Accession	NM_006217 , NP_006208
Reactivity	Human, Mouse, Rat, Rabbit, Pig, Goat, Dog, Guinea Pig, Horse, Bovine
Predicted	Mouse, Rat, Rabbit, Pig, Dog, Horse, Bovine
Host	Rabbit
Clonality	Polyclonal
Calculated MW	45776

Additional Information

Gene ID	67931
Alias Symbol	MEPI, PANCPIN, PI14, TSA2004
Other Names	Serpin I2, Serine protease inhibitor 14, Serpini2, Spi14
Format	Liquid. Purified antibody supplied in 1x PBS buffer with 0.09% (w/v) sodium azide and 2% sucrose.
Reconstitution & Storage	Add 50 ul of distilled water. Final anti-SERPINI2 antibody concentration is 1 mg/ml in PBS buffer with 2% sucrose. For longer periods of storage, store at 20°C. Avoid repeat freeze-thaw cycles.
Precautions	SERPINI2 antibody - middle region is for research use only and not for use in diagnostic or therapeutic procedures.

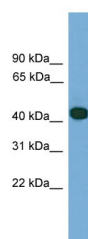
Protein Information

Name	Serpini2
Synonyms	Spi14
Cellular Location	Secreted.
Tissue Location	Expressed in pancreas.

References

Chang W.S.,et al.Submitted (MAR-2000) to the EMBL/GenBank/DDBJ databases.

Images



WB Suggested Anti-SERPINI2 Antibody Titration: 1.0
µg/ml
Positive Control: Transfected 293T

Please note: All products are 'FOR RESEARCH USE ONLY. NOT FOR USE IN DIAGNOSTIC OR THERAPEUTIC PROCEDURES'.