

APIP antibody - middle region

Rabbit Polyclonal Antibody

Catalog # AI14005

Product Information

Application	WB
Primary Accession	Q96GX9
Other Accession	NM_015957 , NP_057041
Reactivity	Human, Mouse, Rat, Rabbit, Zebrafish, Pig, Dog, Guinea Pig, Horse, Bovine, Yeast
Predicted Host	Human, Mouse, Rat, Rabbit, Zebrafish, Chicken, Dog, Guinea Pig, Horse
Clonality	Rabbit
Calculated MW	Polyclonal 27125

Additional Information

Gene ID	51074
Alias Symbol	APIP2, CGI-29, MMRP19, dj179L10.2, CGI29
Other Names	Methylthioribulose-1-phosphate dehydratase {ECO:0000255 HAMAP-Rule:MF_03116}, MTRu-1-P dehydratase {ECO:0000255 HAMAP-Rule:MF_03116}, 4.2.1.109 {ECO:0000255 HAMAP-Rule:MF_03116}, APAF1-interacting protein {ECO:0000255 HAMAP-Rule:MF_03116}, hAPIP, APIP {ECO:0000255 HAMAP-Rule:MF_03116}
Format	Liquid. Purified antibody supplied in 1x PBS buffer with 0.09% (w/v) sodium azide and 2% sucrose.
Reconstitution & Storage	Add 50 ul of distilled water. Final anti-APIP antibody concentration is 1 mg/ml in PBS buffer with 2% sucrose. For longer periods of storage, store at 20°C. Avoid repeat freeze-thaw cycles.
Precautions	APIP antibody - middle region is for research use only and not for use in diagnostic or therapeutic procedures.

Protein Information

Name	APIP {ECO:0000255 HAMAP-Rule:MF_03116}
Function	Catalyzes the dehydration of methylthioribulose-1-phosphate (MTRu-1-P) into 2,3-diketo-5-methylthiopentyl-1-phosphate (DK-MTP-1-P). Functions in the methionine salvage pathway, which plays a key role in cancer, apoptosis, microbial proliferation and inflammation. May inhibit the CASP1-related inflammatory response (pyroptosis), the CASP9-dependent apoptotic pathway

and the cytochrome c-dependent and APAF1-mediated cell death.

Cellular Location

Cytoplasm {ECO:0000255|HAMAP-Rule:MF_03116,
ECO:0000269|PubMed:15262985, ECO:0000269|PubMed:23285211}

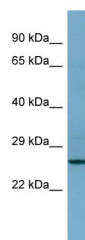
Tissue Location

Isoform 1 is ubiquitously expressed. Isoform 2 is expressed at lower levels and detected in heart, brain, pancreas, liver, placenta, skeletal muscle and kidney

References

Lai C.-H.,et al.Genome Res. 10:703-713(2000).
Ota T.,et al.Nat. Genet. 36:40-45(2004).
Taylor T.D.,et al.Nature 440:497-500(2006).
Cho D.-H.,et al.J. Biol. Chem. 279:39942-39950(2004).
Burkard T.R.,et al.BMC Syst. Biol. 5:17-17(2011).

Images



WB Suggested Anti-APIP Antibody Titration: 0.2-1 µg/ml
ELISA Titer: 1:312500
Positive Control: 721_B cell lysate
APIP is supported by BioGPS gene expression data to be expressed in 721_B

Please note: All products are 'FOR RESEARCH USE ONLY. NOT FOR USE IN DIAGNOSTIC OR THERAPEUTIC PROCEDURES'.