

# ACTL6A Antibody - middle region

Rabbit Polyclonal Antibody  
Catalog # AI14015

## Product Information

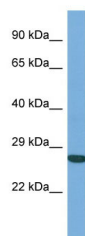
<b>Application</b>	WB
<b>Primary Accession</b>	<a href="#">D3DNS0</a>
<b>Reactivity</b>	Human, Mouse, Rat, Rabbit, Zebrafish, Pig, Dog, Guinea Pig, Horse, Bovine
<b>Predicted</b>	Human, Mouse, Rat, Rabbit, Zebrafish, Pig, Dog, Guinea Pig, Horse, Bovine
<b>Host</b>	Rabbit
<b>Clonality</b>	Polyclonal
<b>Calculated MW</b>	24 KDa

## Additional Information

<b>Format</b>	Liquid. Purified antibody supplied in 1x PBS buffer with 0.09% (w/v) sodium azide and 2% sucrose.
<b>Reconstitution &amp; Storage</b>	Add 50 $\mu$ l of distilled water. Final Anti-ACTL6A antibody concentration is 1 mg/ml in PBS buffer with 2% sucrose. For longer periods of storage, store at -20°C. Avoid repeat freeze-thaw cycles.
<b>Precautions</b>	ACTL6A Antibody - middle region is for research use only and not for use in diagnostic or therapeutic procedures.

## Protein Information

## Images



Host: Rabbit  
Target Name: ACTL6A  
Sample Tissue: THP-1 Whole cell lysate  
S  
Antibody Dilution: 1.0 $\mu$ g/ml

Please note: All products are 'FOR RESEARCH USE ONLY. NOT FOR USE IN DIAGNOSTIC OR THERAPEUTIC PROCEDURES'.