

# HECA antibody - middle region

Rabbit Polyclonal Antibody

Catalog # AI14017

## Product Information

---

<b>Application</b>	WB
<b>Primary Accession</b>	<a href="#">Q9UBI9</a>
<b>Other Accession</b>	<a href="#">NM_016217</a> , <a href="#">NP_057301</a>
<b>Reactivity</b>	Human, Mouse, Rat, Rabbit, Zebrafish, Pig, Dog, Guinea Pig, Horse, Bovine
<b>Predicted</b>	Mouse, Rat, Rabbit, Zebrafish, Pig, Chicken, Dog, Guinea Pig, Bovine
<b>Host</b>	Rabbit
<b>Clonality</b>	Polyclonal
<b>Calculated MW</b>	58837

## Additional Information

---

<b>Gene ID</b>	51696
<b>Alias Symbol</b>	HDC, HDCL, HHDC, dj225E12.1
<b>Other Names</b>	Headcase protein homolog, hHDC, HECA, HDC
<b>Format</b>	Liquid. Purified antibody supplied in 1x PBS buffer with 0.09% (w/v) sodium azide and 2% sucrose.
<b>Reconstitution &amp; Storage</b>	Add 50 ul of distilled water. Final anti-HECA antibody concentration is 1 mg/ml in PBS buffer with 2% sucrose. For longer periods of storage, store at 20°C. Avoid repeat freeze-thaw cycles.
<b>Precautions</b>	HECA antibody - middle region is for research use only and not for use in diagnostic or therapeutic procedures.

## Protein Information

---

<b>Name</b>	HECA
<b>Synonyms</b>	HDC
<b>Function</b>	May play an important role in some human cancers. May be part of the regulatory mechanism in the development of epithelial tube networks such as the circulatory system and lungs.
<b>Tissue Location</b>	Expressed in all tissues examined. Highest levels are in the spleen, thymus, peripheral blood and heart. Lowest in the kidney and pancreas.

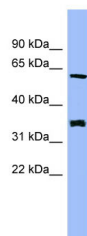
## References

---

Makino N.,et al.DNA Seq. 11:547-553(2001).  
Mungall A.J.,et al.Nature 425:805-811(2003).  
Dephoure N.,et al.Proc. Natl. Acad. Sci. U.S.A. 105:10762-10767(2008).  
Mayya V.,et al.Sci. Signal. 2:RA46-RA46(2009).

## Images

---



WB Suggested Anti-HECA Antibody Titration: 0.2-1 µg/ml  
Positive Control: PANC1 cell lysate

Please note: All products are 'FOR RESEARCH USE ONLY. NOT FOR USE IN DIAGNOSTIC OR THERAPEUTIC PROCEDURES'.