

Rab23 antibody - middle region

Rabbit Polyclonal Antibody

Catalog # AI14021

Product Information

Application	WB
Primary Accession	P35288
Other Accession	NM_008999 , NP_033025
Reactivity	Human, Mouse, Rat, Rabbit, Zebrafish, Pig, Dog, Guinea Pig, Horse, Bovine
Predicted	Human, Mouse, Rat, Zebrafish, Chicken, Dog, Bovine
Host	Rabbit
Clonality	Polyclonal
Calculated MW	26678

Additional Information

Alias Symbol	AW545388, opb, opb2
Other Names	Ras-related protein Rab-23, Protein open brain, Rab-15, Rab23, Opb
Format	Liquid. Purified antibody supplied in 1x PBS buffer with 0.09% (w/v) sodium azide and 2% sucrose.
Reconstitution & Storage	Add 50 ul of distilled water. Final anti-Rab23 antibody concentration is 1 mg/ml in PBS buffer with 2% sucrose. For longer periods of storage, store at 20°C. Avoid repeat freeze-thaw cycles.
Precautions	Rab23 antibody - middle region is for research use only and not for use in diagnostic or therapeutic procedures.

Protein Information

Name	Rab23 {ECO:0000312 MGI:MGI:99833}
Synonyms	Opb
Function	The small GTPases Rab are key regulators of intracellular membrane trafficking, from the formation of transport vesicles to their fusion with membranes. Rabs cycle between an inactive GDP-bound form and an active GTP-bound form that is able to recruit to membranes different set of downstream effectors directly responsible for vesicle formation, movement, tethering and fusion (By similarity). Plays a role in autophagic vacuole assembly, and mediates defense against pathogens, such as S.aureus, by promoting their capture by autophagosomes that then merge with lysosomes (By similarity). Together with SUFU, prevents nuclear import of GLI1, and thereby inhibits GLI1 transcription factor activity. Regulates GLI1 in differentiating chondrocytes. Likewise, regulates GLI3 proteolytic processing

and modulates GLI2 and GLI3 transcription factor activity.

Cellular Location

Cell membrane; Lipid-anchor; Cytoplasmic side. Cytoplasm Endosome membrane. Cytoplasmic vesicle, autophagosome {ECO:0000250|UniProtKB:Q9ULC3}. Cytoplasmic vesicle, phagosome. Cytoplasmic vesicle, phagosome membrane; Lipid-anchor; Cytoplasmic side. Note=Recruited to phagosomes containing S.aureus or Mycobacterium. {ECO:0000250|UniProtKB:Q9ULC3}

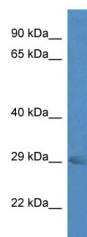
Tissue Location

Detected in brain neurons (at protein level). Forebrain and midbrain.

References

Olkkonen V.M.,et al.Gene 138:207-211(1994).
Chavrier P.,et al.Gene 112:261-264(1992).
Gunther T.,et al.Development 120:3119-3130(1994).
Eggenchwiler J.T.,et al.Dev. Biol. 227:648-660(2000).
Eggenchwiler J.T.,et al.Nature 412:194-198(2001).

Images



WB Suggested Anti-Rab23 Antibody Titration: 1.0 µg/ml
Positive Control: Mouse Brain

Please note: All products are 'FOR RESEARCH USE ONLY. NOT FOR USE IN DIAGNOSTIC OR THERAPEUTIC PROCEDURES'.