

Ccdc174 Antibody - middle region

Rabbit Polyclonal Antibody

Catalog # AI14032

Product Information

Application	WB
Primary Accession	Q5PQS7
Other Accession	NM_001009659 , NP_001009659
Reactivity	Human, Mouse, Rat, Rabbit, Pig, Dog, Guinea Pig, Horse, Bovine
Predicted	Human, Mouse, Rat, Rabbit, Pig, Dog, Guinea Pig, Horse, Bovine
Host	Rabbit
Clonality	Polyclonal
Calculated MW	54449

Additional Information

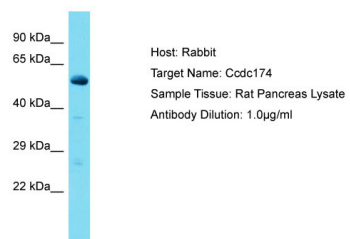
Gene ID	297458
Other Names	Coiled-coil domain-containing protein 174, Ccdc174
Format	Liquid. Purified antibody supplied in 1x PBS buffer with 0.09% (w/v) sodium azide and 2% sucrose.
Reconstitution & Storage	Add 50 μ l of distilled water. Final Anti-Ccdc174 antibody concentration is 1 mg/ml in PBS buffer with 2% sucrose. For longer periods of storage, store at -20°C. Avoid repeat freeze-thaw cycles.
Precautions	Ccdc174 Antibody - middle region is for research use only and not for use in diagnostic or therapeutic procedures.

Protein Information

Name	Ccdc174
Function	Probably involved in neuronal development.
Cellular Location	Nucleus {ECO:0000250 UniProtKB:Q6PII3}.

Images

Host: Rabbit
Target Name: Ccdc174
Sample Tissue: Rat Pancreas lysates



Antibody Dilution: 1.0µg/ml

Host: Rabbit
Target Name: Ccdc174
Sample Tissue: Rat Pancreas Lysate
Antibody Dilution: 1.0µg/ml

Please note: All products are 'FOR RESEARCH USE ONLY. NOT FOR USE IN DIAGNOSTIC OR THERAPEUTIC PROCEDURES'.