

Prr16 antibody - N-terminal region

Rabbit Polyclonal Antibody

Catalog # AI14038

Product Information

Application	WB
Primary Accession	A3KMN5
Other Accession	NM_001081224 , NP_001074693
Reactivity	Human, Mouse, Rat, Rabbit, Zebrafish, Pig, Dog, Guinea Pig, Horse, Bovine
Predicted	Human, Mouse, Rat, Pig, Dog, Guinea Pig, Horse, Bovine
Host	Rabbit
Clonality	Polyclonal
Calculated MW	32836

Additional Information

Gene ID	71373
Alias Symbol	5430406M13Rik, AI607429
Other Names	Protein Largen, Proline-rich protein 16, Prr16
Format	Liquid. Purified antibody supplied in 1x PBS buffer with 0.09% (w/v) sodium azide and 2% sucrose.
Reconstitution & Storage	Add 50 ul of distilled water. Final anti-Prr16 antibody concentration is 1 mg/ml in PBS buffer with 2% sucrose. For longer periods of storage, store at 20°C. Avoid repeat freeze-thaw cycles.
Precautions	Prr16 antibody - N-terminal region is for research use only and not for use in diagnostic or therapeutic procedures.

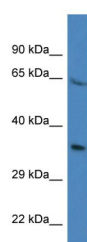
Protein Information

Name	Prr16
Function	Regulator of cell size that promotes cell size increase independently of mTOR and Hippo signaling pathways. Acts by stimulating the translation of specific mRNAs, including those encoding proteins affecting mitochondrial functions. Increases mitochondrial mass and respiration (Probable).

References

Carninci P., et al. Science 309:1559-1563(2005).
Yamamoto K., et al. Mol. Cell 53:904-915(2014).

Images



WB Suggested Anti-Prr16 Antibody Titration: 1.0 µg/ml
Positive Control: Mouse Kidney

Please note: All products are 'FOR RESEARCH USE ONLY. NOT FOR USE IN DIAGNOSTIC OR THERAPEUTIC PROCEDURES'.