

UCHL5IP antibody - middle region

Rabbit Polyclonal Antibody

Catalog # AI14041

Product Information

Application	WB
Primary Accession	Q99871
Other Accession	NM_207107 , NP_996990
Reactivity	Human, Mouse, Rabbit, Pig, Dog, Horse, Bovine
Predicted	Human, Mouse, Rabbit, Pig, Dog, Horse, Bovine
Host	Rabbit
Clonality	Polyclonal
Calculated MW	39794

Additional Information

Gene ID	55559
Alias Symbol	HSXQ28ORF, UIP1, UCHL5IP
Other Names	HAUS augmin-like complex subunit 7, 26S proteasome-associated UCH37-interacting protein 1, UCHL5-interacting protein, X-linked protein STS1769, HAUS7, UCHL5IP, UIP1
Format	Liquid. Purified antibody supplied in 1x PBS buffer with 0.09% (w/v) sodium azide and 2% sucrose.
Reconstitution & Storage	Add 50 ul of distilled water. Final anti-UCHL5IP antibody concentration is 1 mg/ml in PBS buffer with 2% sucrose. For longer periods of storage, store at 20°C. Avoid repeat freeze-thaw cycles.
Precautions	UCHL5IP antibody - middle region is for research use only and not for use in diagnostic or therapeutic procedures.

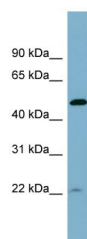
Protein Information

Name	HAUS7
Synonyms	UCHL5IP, UIP1
Function	Contributes to mitotic spindle assembly, maintenance of centrosome integrity and completion of cytokinesis as part of the HAUS augmin-like complex.
Cellular Location	Cytoplasm, cytoskeleton, microtubule organizing center, centrosome. Cytoplasm, cytoskeleton, spindle. Note=Localizes to interphase centrosomes and to mitotic spindle microtubules.

Tissue Location

Detected in spleen, thymus, testis, ovary, small intestine and colon, with highest levels of expression in testis and ovary.

Images



WB Suggested Anti-UCHL5IP Antibody Titration: 0.2-1 μ g/ml

ELISA Titer: 1:1562500

Positive Control: Hela cell lysate

HAUS7 is strongly supported by BioGPS gene expression data to be expressed in Human HeLa cells

Please note: All products are 'FOR RESEARCH USE ONLY. NOT FOR USE IN DIAGNOSTIC OR THERAPEUTIC PROCEDURES'.