

# SMU1 Antibody - N-terminal region

Rabbit Polyclonal Antibody

Catalog # AI14064

## Product Information

Application	WB
Primary Accession	<a href="#">Q2TAY7</a>
Other Accession	<a href="#">NM_018225</a> , <a href="#">NP_060695</a>
Reactivity	Human, Mouse, Rat, Rabbit, Zebrafish, Pig, Dog, Guinea Pig, Horse, Bovine
Predicted	Human, Mouse, Rat, Rabbit, Zebrafish, Pig, Dog, Guinea Pig, Horse, Bovine
Host	Rabbit
Clonality	Polyclonal
Calculated MW	57544

## Additional Information

Gene ID	55234
Alias Symbol	BWD, RP11-54K16.3, SMU-1, fSAP57
Other Names	WD40 repeat-containing protein SMU1, Smu-1 suppressor of mec-8 and unc-52 protein homolog, WD40 repeat-containing protein SMU1, N-terminally processed, SMU1
Format	Liquid. Purified antibody supplied in 1x PBS buffer with 0.09% (w/v) sodium azide and 2% sucrose.
Reconstitution & Storage	Add 50 $\mu$ l of distilled water. Final Anti-SMU1 antibody concentration is 1 mg/ml in PBS buffer with 2% sucrose. For longer periods of storage, store at -20°C. Avoid repeat freeze-thaw cycles.
Precautions	SMU1 Antibody - N-terminal region is for research use only and not for use in diagnostic or therapeutic procedures.

## Protein Information

Name	SMU1
Function	Involved in pre-mRNA splicing as a component of the spliceosome (PubMed: <a href="#">28781166</a> ). Regulates alternative splicing of the HSPG2 pre-mRNA (By similarity). Required for normal accumulation of IK (PubMed: <a href="#">24945353</a> ). Required for normal mitotic spindle assembly and normal progress through mitosis (By similarity).
Cellular Location	Cytoplasm {ECO:0000250 UniProtKB:Q99M63}. Nucleus. Nucleus speckle {ECO:0000250 UniProtKB:Q76B40}. Note=Colocalizes with SRSF1 in nuclear speckles. {ECO:0000250 UniProtKB:Q76B40}

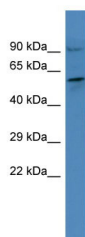
## References

---

Ota T.,et al.Nat. Genet. 36:40-45(2004).  
Humphray S.J.,et al.Nature 429:369-374(2004).  
Bienvenut W.V.,et al.Submitted (DEC-2008) to UniProtKB.  
Gauci S.,et al.Anal. Chem. 81:4493-4501(2009).  
Burkard T.R.,et al.BMC Syst. Biol. 5:17-17(2011).

## Images

---



Host: Rabbit  
Target Name: SMU1  
Sample Tissue: COLO205 Whole cell lysate  
S  
Antibody Dilution: 1.0µg/ml

Please note: All products are 'FOR RESEARCH USE ONLY. NOT FOR USE IN DIAGNOSTIC OR THERAPEUTIC PROCEDURES'.