

C7orf43 antibody - middle region

Rabbit Polyclonal Antibody

Catalog # AI14069

Product Information

Application	WB
Primary Accession	Q8WVR3
Other Accession	NM_018275 , NP_060745
Reactivity	Human, Mouse, Rat, Rabbit, Zebrafish, Pig, Dog, Guinea Pig, Bovine
Predicted	Human
Host	Rabbit
Clonality	Polyclonal
Calculated MW	62597

Additional Information

Gene ID	55262
Alias Symbol	DKFZp761G0712, FLJ10925
Other Names	Uncharacterized protein C7orf43, C7orf43
Format	Liquid. Purified antibody supplied in 1x PBS buffer with 0.09% (w/v) sodium azide and 2% sucrose.
Reconstitution & Storage	Add 50 ul of distilled water. Final anti-C7orf43 antibody concentration is 1 mg/ml in PBS buffer with 2% sucrose. For longer periods of storage, store at 20°C. Avoid repeat freeze-thaw cycles.
Precautions	C7orf43 antibody - middle region is for research use only and not for use in diagnostic or therapeutic procedures.

Protein Information

Name	TRAPPC14 (HGNC:25604)
Function	Specific subunit of the TRAPP (transport protein particle) II complex, a highly conserved vesicle tethering complex that functions in late Golgi trafficking as a membrane tether (PubMed: 30715179 , PubMed: 31467083). TRAPP II complex also has GEF activity toward RAB1A (By similarity). TRAPPC14 is dispensable for TRAPPII complex integrity but mediates RAB3IP preciliary vesicle trafficking to the mother centriole during ciliogenesis (PubMed: 31467083). Modulates YAP1 activity as transcriptional regulator (PubMed: 30447097).
Cellular Location	Cytoplasm, cytoskeleton, spindle. Vesicle. Midbody Cytoplasm. Note=During mitosis, precedes alpha-tubulin in gap formation of cell abscission at the

midbody and is co-localized with PLK1 at the edges of microtubules extensions of daughter cells post cytokinesis abscission (PubMed:30715179)
Colocalizes with RAB3IP on preciliary vesicles (PubMed:31467083)

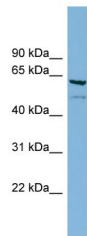
Tissue Location

Broadly expressed. High levels in brain, cerebellum, testis and whole blood.

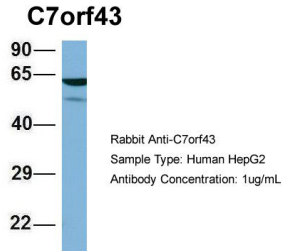
References

Wiemann S.,et al.Genome Res. 11:422-435(2001).
Ota T.,et al.Nat. Genet. 36:40-45(2004).
Scherer S.W.,et al.Science 300:767-772(2003).
Mural R.J.,et al.Submitted (SEP-2005) to the EMBL/GenBank/DDBJ databases.
Dephoure N.,et al.Proc. Natl. Acad. Sci. U.S.A. 105:10762-10767(2008).

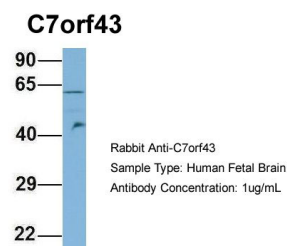
Images



WB Suggested Anti-C7orf43 Antibody Titration: 0.2-1
µg/ml
ELISA Titer: 1:312500
Positive Control: Hela cell lysate



Host:Rabbit
Target Name:C7orf43
Sample Tissue:HepG2
Antibody Dilution: 1.0µg/mL
C7orf43 is supported by
BioGPS gene expression data to be expressed in HepG2



Host:Rabbit
Target Name:C7orf43
Sample Tissue:Human Fetal Brain
Antibody Dilution: 1.0µg/mL

Please note: All products are 'FOR RESEARCH USE ONLY. NOT FOR USE IN DIAGNOSTIC OR THERAPEUTIC PROCEDURES'.