

CENPN antibody - middle region

Rabbit Polyclonal Antibody

Catalog # AI14084

Product Information

Application	WB, IF
Primary Accession	Q96H22
Other Accession	NM_001100625 , NP_001094095
Reactivity	Human, Mouse, Rat, Rabbit, Bovine, Guinea Pig, Dog
Predicted	Human, Mouse, Rat, Rabbit, Chicken, Bovine, Dog
Host	Rabbit
Clonality	Polyclonal
Calculated MW	39555

Additional Information

Gene ID	55839
Alias Symbol	BM039, C16orf60, CENP-N, FLJ13607, FLJ22660
Other Names	Centromere protein N, CENP-N, Interphase centromere complex protein 32, CENPN, C16orf60, ICEN32
Format	Liquid. Purified antibody supplied in 1x PBS buffer with 0.09% (w/v) sodium azide and 2% sucrose.
Reconstitution & Storage	Add 50 ul of distilled water. Final anti-CENPN antibody concentration is 1 mg/ml in PBS buffer with 2% sucrose. For longer periods of storage, store at 20°C. Avoid repeat freeze-thaw cycles.
Precautions	CENPN antibody - middle region is for research use only and not for use in diagnostic or therapeutic procedures.

Protein Information

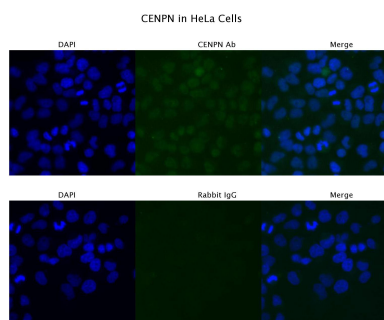
Name	CENPN
Synonyms	C16orf60, ICEN32
Function	Component of the CENPA-NAC (nucleosome-associated) complex, a complex that plays a central role in assembly of kinetochore proteins, mitotic progression and chromosome segregation. The CENPA-NAC complex recruits the CENPA-CAD (nucleosome distal) complex and may be involved in incorporation of newly synthesized CENPA into centromeres. CENPN is the first protein to bind specifically to CENPA nucleosomes and the direct binding of CENPA nucleosomes by CENPN is required for centromere assembly. Required for chromosome congression and efficiently align the chromosomes

on a metaphase plate.

Cellular Location

Nucleus. Chromosome, centromere, kinetochore. Note=Localizes exclusively in the kinetochore domain of centromeres Kinetochore-bound levels decrease when cells enter mitosis and increase again when cells exit mitosis

Images



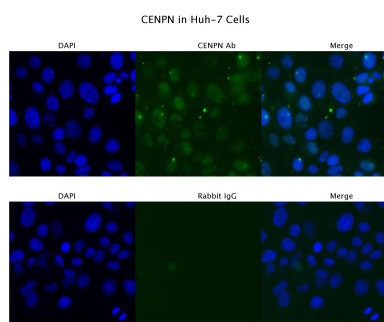
Sample Type : HeLa

Primary Antibody Dilution: 4 µg/ml

Secondary Antibody : Anti-rabbit Alexa 546

Secondary Antibody Dilution: 2 µg/ml

Gene Name : CENPN



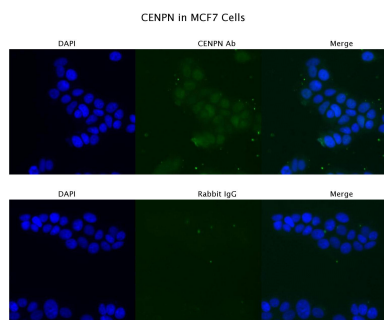
Sample Type : Huh-7

Primary Antibody Dilution: 4 µg/ml

Secondary Antibody : Anti-rabbit Alexa 546

Secondary Antibody Dilution: 2 µg/ml

Gene Name : CENPN



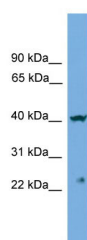
Sample Type : MCF7

Primary Antibody Dilution: 4 µg/ml

Secondary Antibody : Anti-rabbit Alexa 546

Secondary Antibody Dilution: 2 µg/ml

Gene Name : CENPN



WB Suggested Anti-CENPN Antibody Titration: 0.2-1 µg/ml

Positive Control: Jurkat cell lysate

CENPN is supported by BioGPS gene expression data to be expressed in Jurkat

Please note: All products are 'FOR RESEARCH USE ONLY. NOT FOR USE IN DIAGNOSTIC OR THERAPEUTIC PROCEDURES'.