

LANCL2 antibody - middle region

Rabbit Polyclonal Antibody

Catalog # AI14088

Product Information

Application	WB
Primary Accession	Q9NS86
Other Accession	NM_018697 , NP_061167
Reactivity	Human, Mouse, Rat, Rabbit, Zebrafish, Goat, Dog, Guinea Pig, Horse, Bovine, Yeast
Predicted Host	Human, Mouse, Rat, Rabbit, Chicken, Dog, Horse, Bovine
Clonality	Rabbit
Calculated MW	Polyclonal 50854

Additional Information

Gene ID	55915
Alias Symbol Other Names	GPR69B, MGC87139, TASP LanC-like protein 2, Testis-specific adriamycin sensitivity protein, LANCL2, GPR69B, TASP
Format	Liquid. Purified antibody supplied in 1x PBS buffer with 0.09% (w/v) sodium azide and 2% sucrose.
Reconstitution & Storage	Add 50 ul of distilled water. Final anti-LANCL2 antibody concentration is 1 mg/ml in PBS buffer with 2% sucrose. For longer periods of storage, store at 20°C. Avoid repeat freeze-thaw cycles.
Precautions	LANCL2 antibody - middle region is for research use only and not for use in diagnostic or therapeutic procedures.

Protein Information

Name	LANCL2
Synonyms	GPR69B, TASP
Function	Necessary for abscisic acid (ABA) binding on the cell membrane and activation of the ABA signaling pathway in granulocytes.
Cellular Location	Nucleus. Cytoplasm. Cell membrane Note=Localizes to the juxta-nuclear vesicles (PubMed:16979580) Associates with the cortical actin cytoskeleton (PubMed:16979580) Cholesterol depletion by methyl-beta-cyclodextrin causes partial dissociation from the cell membrane in vitro and an enhanced cell

detachment from the matrix in vivo (PubMed:16979580). Membrane-association is important for the increased cellular sensitivity to an anticancer drug (adriamycin) (PubMed:16979580)

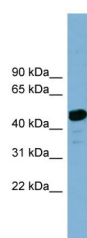
Tissue Location

Expressed in brain and testis.

References

Mayer H.,et al.DNA Seq. 12:161-166(2001).
Sugimoto Y.,et al.Submitted (DEC-1999) to the EMBL/GenBank/DDBJ databases.
Eley G.D.,et al.Submitted (FEB-2001) to the EMBL/GenBank/DDBJ databases.
Ota T.,et al.Nat. Genet. 36:40-45(2004).
Hillier L.W.,et al.Nature 424:157-164(2003).

Images



WB Suggested Anti-LANCL2 Antibody Titration: 0.2-1
µg/ml
Positive Control: Human Placenta

Please note: All products are 'FOR RESEARCH USE ONLY. NOT FOR USE IN DIAGNOSTIC OR THERAPEUTIC PROCEDURES'.