

# LANCL2 antibody - middle region

Rabbit Polyclonal Antibody

Catalog # AI14089

## Product Information

---

<b>Application</b>	WB
<b>Primary Accession</b>	<a href="#">Q9NS86</a>
<b>Other Accession</b>	<a href="#">NM_018697</a> , <a href="#">NP_061167</a>
<b>Reactivity</b>	Human, Mouse, Rat, Rabbit, Zebrafish, Dog, Guinea Pig, Horse, Bovine
<b>Predicted</b>	Human, Mouse, Rat, Rabbit, Chicken, Dog, Horse, Bovine
<b>Host</b>	Rabbit
<b>Clonality</b>	Polyclonal
<b>Calculated MW</b>	50854

## Additional Information

---

<b>Gene ID</b>	55915
<b>Alias Symbol</b>	GPR69B, MGC87139, TASP
<b>Other Names</b>	LanC-like protein 2, Testis-specific adriamycin sensitivity protein, LANCL2, GPR69B, TASP
<b>Format</b>	Liquid. Purified antibody supplied in 1x PBS buffer with 0.09% (w/v) sodium azide and 2% sucrose.
<b>Reconstitution &amp; Storage</b>	Add 50 ul of distilled water. Final anti-LANCL2 antibody concentration is 1 mg/ml in PBS buffer with 2% sucrose. For longer periods of storage, store at 20°C. Avoid repeat freeze-thaw cycles.
<b>Precautions</b>	LANCL2 antibody - middle region is for research use only and not for use in diagnostic or therapeutic procedures.

## Protein Information

---

<b>Name</b>	LANCL2
<b>Synonyms</b>	GPR69B, TASP
<b>Function</b>	Necessary for abscisic acid (ABA) binding on the cell membrane and activation of the ABA signaling pathway in granulocytes.
<b>Cellular Location</b>	Nucleus. Cytoplasm. Cell membrane Note=Localizes to the juxta-nuclear vesicles (PubMed:16979580) Associates with the cortical actin cytoskeleton (PubMed:16979580) Cholesterol depletion by methyl-beta-cyclodextrin causes partial dissociation from the cell membrane in vitro and an enhanced cell detachment from the matrix in vivo (PubMed:16979580). Membrane-

association is important for the increased cellular sensitivity to an anticancer drug (adriamycin) (PubMed:16979580)

## Tissue Location

Expressed in brain and testis.

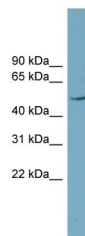
## References

---

Mayer H.,et al.DNA Seq. 12:161-166(2001).  
Sugimoto Y.,et al.Submitted (DEC-1999) to the EMBL/GenBank/DDBJ databases.  
Eley G.D.,et al.Submitted (FEB-2001) to the EMBL/GenBank/DDBJ databases.  
Ota T.,et al.Nat. Genet. 36:40-45(2004).  
Hillier L.W.,et al.Nature 424:157-164(2003).

## Images

---



WB Suggested Anti-LANCL2 Antibody Titration: 0.2-1  
µg/ml  
ELISA Titer: 1:1562500  
Positive Control: Human Muscle

Please note: All products are 'FOR RESEARCH USE ONLY. NOT FOR USE IN DIAGNOSTIC OR THERAPEUTIC PROCEDURES'.