

CPXM1 antibody - middle region

Rabbit Polyclonal Antibody

Catalog # AI14102

Product Information

Application	WB
Primary Accession	Q96SM3
Other Accession	NM_019609 , NP_062555
Reactivity	Human, Mouse, Rat, Rabbit, Pig, Dog, Guinea Pig, Horse, Bovine
Predicted	Human, Mouse, Rat, Rabbit, Pig, Dog, Guinea Pig, Horse, Bovine
Host	Rabbit
Clonality	Polyclonal
Calculated MW	81668

Additional Information

Gene ID	56265
Alias Symbol	CPX1, CPXM
Other Names	Probable carboxypeptidase X1, 3.4.17.-, Metalloprotease CPX-1, CPXM1, CPX1, CPXM
Format	Liquid. Purified antibody supplied in 1x PBS buffer with 0.09% (w/v) sodium azide and 2% sucrose.
Reconstitution & Storage	Add 50 ul of distilled water. Final anti-CPXM1 antibody concentration is 1 mg/ml in PBS buffer with 2% sucrose. For longer periods of storage, store at 20°C. Avoid repeat freeze-thaw cycles.
Precautions	CPXM1 antibody - middle region is for research use only and not for use in diagnostic or therapeutic procedures.

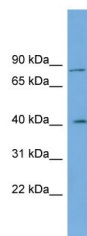
Protein Information

Name	CPXM1
Synonyms	CPX1, CPXM
Function	May be involved in cell-cell interactions. No carboxypeptidase activity was found yet (By similarity).
Cellular Location	Secreted.

References

Ota T.,et al.Nat. Genet. 36:40-45(2004).
Clark H.F.,et al.Genome Res. 13:2265-2270(2003).
Deloukas P.,et al.Nature 414:865-871(2001).

Images



WB Suggested Anti-CPXM1 Antibody Titration: 0.2-1 µg/ml
ELISA Titer: 1:1562500
Positive Control: Human Lung

Please note: All products are 'FOR RESEARCH USE ONLY. NOT FOR USE IN DIAGNOSTIC OR THERAPEUTIC PROCEDURES'.