

# Irgc1 antibody - N-terminal region

Rabbit Polyclonal Antibody

Catalog # AI14103

## Product Information

---

|                          |  |
|--------------------------|--|
| <b>Application</b>       | WB   |
| <b>Primary Accession</b> | <a href="#">Q8C262</a>                                 |
| <b>Other Accession</b>   | <a href="#">NM_199013</a> , <a href="#">NP_950178</a>  |
| <b>Reactivity</b>        | Human, Mouse, Rat, Pig, Dog, Guinea Pig, Horse, Bovine |
| <b>Predicted</b>         | Mouse  |
| <b>Host</b>              | Rabbit   |
| <b>Clonality</b>         | Polyclonal   |
| <b>Calculated MW</b>     | 45145  |

## Additional Information

---

|                                     |  |
|-------------------------------------|--|
| <b>Alias Symbol</b>                 | F630044M05Rik, Gm1102, Gm474, Iigp5, Irgc  |
| <b>Other Names</b>                  | Interferon-inducible GTPase 5, 3.6.5.-, Immunity-related GTPase cinema 1, Irgc, Gm1102, Iigp5, Irgc1   |
| <b>Format</b>                       | Liquid. Purified antibody supplied in 1x PBS buffer with 0.09% (w/v) sodium azide and 2% sucrose.  |
| <b>Reconstitution &amp; Storage</b> | Add 50 ul of distilled water. Final anti-Irgc1 antibody concentration is 1 mg/ml in PBS buffer with 2% sucrose. For longer periods of storage, store at 20°C. Avoid repeat freeze-thaw cycles. |
| <b>Precautions</b>                  | Irgc1 antibody - N-terminal region is for research use only and not for use in diagnostic or therapeutic procedures.   |

## Protein Information

---

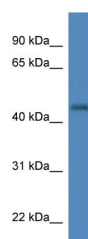
|                          |  |
|--------------------------|--|
| <b>Name</b>              | Irgc {ECO:0000312 MGI:MGI:2685948}   |
| <b>Function</b>          | Required for sperm motility and therefore male fertility, via positive regulation of spermatozoa fibrous sheath formation.           |
| <b>Cellular Location</b> | Cell projection, cilium, flagellum. Lipid droplet. Note=Expressed in the sperm mitochondrial sheath.                                 |
| <b>Tissue Location</b>   | Expressed in spermatozoa tails from the testis and epididymis, where it may be a component of the fibrous sheath (at protein level). |

## References

---

## Images

---



WB Suggested Anti-Irgc1 Antibody Titration: 1.0 µg/ml  
Positive Control: Mouse Brain

Please note: All products are 'FOR RESEARCH USE ONLY. NOT FOR USE IN DIAGNOSTIC OR THERAPEUTIC PROCEDURES'.