

C12orf4 antibody - N-terminal region

Rabbit Polyclonal Antibody

Catalog # AI14112

Product Information

Application	WB
Primary Accession	Q9NQ89
Other Accession	NM_020374 , NP_065107
Reactivity	Human, Mouse, Rat, Rabbit, Zebrafish, Pig, Dog, Guinea Pig, Horse, Bovine
Predicted	Human, Dog, Horse
Host	Rabbit
Clonality	Polyclonal
Calculated MW	63801

Additional Information

Gene ID	57102
Alias Symbol	FLJ21158, FLJ23899
Other Names	Protein C12orf4, C12orf4
Format	Liquid. Purified antibody supplied in 1x PBS buffer with 0.09% (w/v) sodium azide and 2% sucrose.
Reconstitution & Storage	Add 50 ul of distilled water. Final anti-C12orf4 antibody concentration is 1 mg/ml in PBS buffer with 2% sucrose. For longer periods of storage, store at 20°C. Avoid repeat freeze-thaw cycles.
Precautions	C12orf4 antibody - N-terminal region is for research use only and not for use in diagnostic or therapeutic procedures.

Protein Information

Name	FERRY3 (HGNC:1184)
Synonyms	C12orf4
Function	Component of the FERRY complex (Five-subunit Endosomal Rab5 and RNA/ribosome intermediary) (PubMed: 37267905). The FERRY complex directly interacts with mRNAs and RAB5A, and functions as a RAB5A effector involved in the localization and the distribution of specific mRNAs most likely by mediating their endosomal transport. The complex recruits mRNAs and ribosomes to early endosomes through direct mRNA- interaction (PubMed: 37267905). Plays a role in mast cell degranulation.
Cellular Location	Cytoplasm {ECO:0000250 UniProtKB:D4A770}. Early endosome

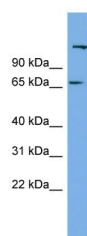
References

White K.E.,et al.Nat. Genet. 26:345-348(2000).

Bechtel S.,et al.BMC Genomics 8:399-399(2007).

Mural R.J.,et al.Submitted (SEP-2005) to the EMBL/GenBank/DDBJ databases.

Images



WB Suggested Anti-C12orf4 Antibody Titration: 0.2-1

µg/ml

ELISA Titer: 1:1562500

Positive Control: PANC1 cell lysate

Please note: All products are 'FOR RESEARCH USE ONLY. NOT FOR USE IN DIAGNOSTIC OR THERAPEUTIC PROCEDURES'.